

EN



INSTALLATION GUIDELINES



DEL 

CONTROL BOX

AQUA 11 / 11S / 9 / 8

PLEASE READ THESE INSTRUCTIONS CAREFULLY AND KEEP THEM FOR FUTURE REFERENCE

Please read this manual carefully to help you understand all of the information and to ensure safe installation, use and servicing. We are not held liable for any damage arising due to a failure to respect the instructions set out in this manual.

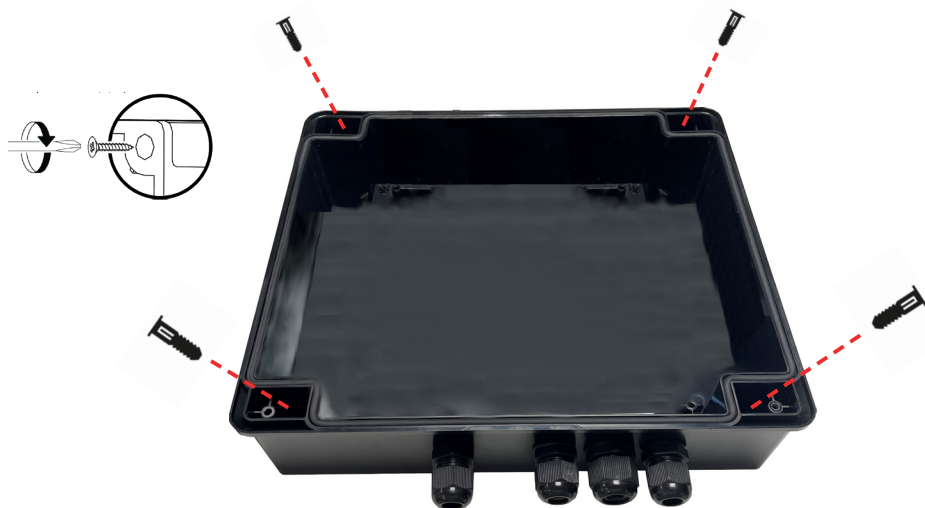
INSTALLATION	3
Elskåp	3
Ledning av AQUA 11S kontrollbox	5
Ledning av AQUA 11 kontrollbox	6
Ledning av AQUA 9 kontrollbox	7
Ledning av AQUA 8 kontrollbox	8
Kablering av Wi-Key-styrsele till strömförsörjningen och motorn	9
Kablering av nyckelknappens sele till strömförsörjningen och motorn.....	10
Kabeldragning av alternativen	11
Efter komplett kabeldragning	12
SERVICE/UNDERHÅLL	13
Reservdelar	13
Felsökningsguide	13
BESTÄMMELSER	14
Garantivillkor	14
SÄKERHETSTIPS	15
ÅTERVINNING	17
Förpackning.....	17
Slut på livscykel.....	17

INSTALLATION

CONTROL BOX

➤ MOUNTING THE CONTROL BOX

- The installation must be carried out in accordance with the electrical standards in force in the country of installation; in France in accordance with standard NF-C 15-100 (part 7-702), in Europe in accordance with standard HD 384-7-702 or equivalent in accordance with local regulations.
- The electrical box must be fixed to a frost-free wall in the equipment room, away from rain, sunlight, any source of heat and any risk of being sprayed or immersed, in an easily accessible location.
- It must be installed level, ideally between 1.2 metres and 1.5 metres from the ground, vertically, with the cable glands facing downwards and on a wall that is sufficiently solid, flat and smooth to withstand the weight of the enclosure.
- The box must be securely fixed to the wall using the screws and plugs supplied.
- If you decide to fix your enclosure by any other means, make sure it is securely fastened, as the warranty may not apply. Please note that adhesives are not considered a reliable means of fixing.



**The guarantee will not be honoured if the enclosure is drilled.
If the enclosure is drilled, be sure to seal the enclosure fixings.
Use the fixings supplied with the enclosure to maintain the IP rating.**

INSTALLATION

The electrical connection of the equipment must only be carried out by a qualified professional, and they must comply with the manufacturer's instructions in addition to the following applicable standards and regulations:

- NF C15-100: Low voltage electrical installations.
- CEI 60364: Electrical installations for buildings.

Please refer to the leaflet enclosed with the control box to ensure correct installation.



Incorrect installation may result in an electric shock, or it may damage the unit. We recommend that you disconnect the control box from the electricity supply prior to any work being carried out on it.

Any specific electrical supply line must be protected by a 30 mA circuit breaker along with a sufficient overcurrent protection control box.

We recommend use of a shielded cable with a nominal cross-section that is not lower than the one indicated in the following table:

Current rating of unit A	Nominal cross-section mm ²
≤0.2	Flat twin tinsel cord a
> 0.2 and ≤ 3	0.5 a
> 3 and ≤ 6	0.75
> 6 and ≤ 10	1.0 (0.75) b
> 10 and ≤ 16	1.5 (1.0) b
> 16 and ≤ 25	2.5
> 25 and ≤ 32	4
> 32 and ≤ 40	6
> 40 and ≤ 63	10

NOTE: For power cables supplied with poly-phase units, the nominal cross-section of the conductors is based on the maximum cross-section of the phase conductors at the end of the power cable that is intended to be connected to the terminals of the unit.

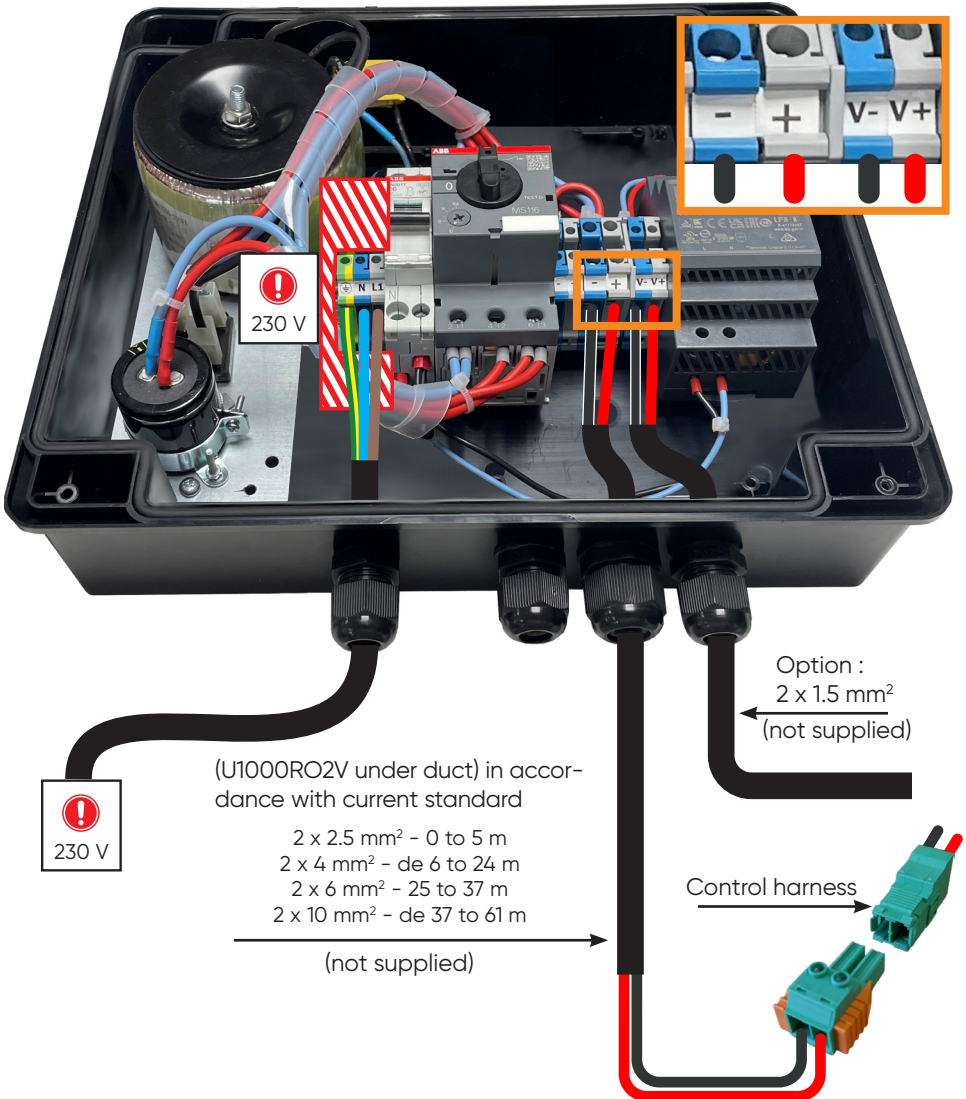
- a These cables can only be used if their length, as measured between the point where the cable or cable protector enters the equipment and the connection to the mains supply, does not exceed 2 m.
- b Cables that have the cross-section indicated in brackets can be used for mobile units if their length does not exceed 2 m.

INSTALLATION

ELECTRICAL WIRING FOR AQUA 11S CONTROL BOX



- Make sure that no-one is in the pool during the operation.
- All connections must be made off-line.



(U1000RO2V under duct) in accordance with current standard

- 2 x 2.5 mm² - 0 to 5 m
- 2 x 4 mm² - de 6 to 24 m
- 2 x 6 mm² - 25 to 37 m
- 2 x 10 mm² - de 37 to 61 m

(not supplied)

Option :
2 x 1.5 mm²
(not supplied)

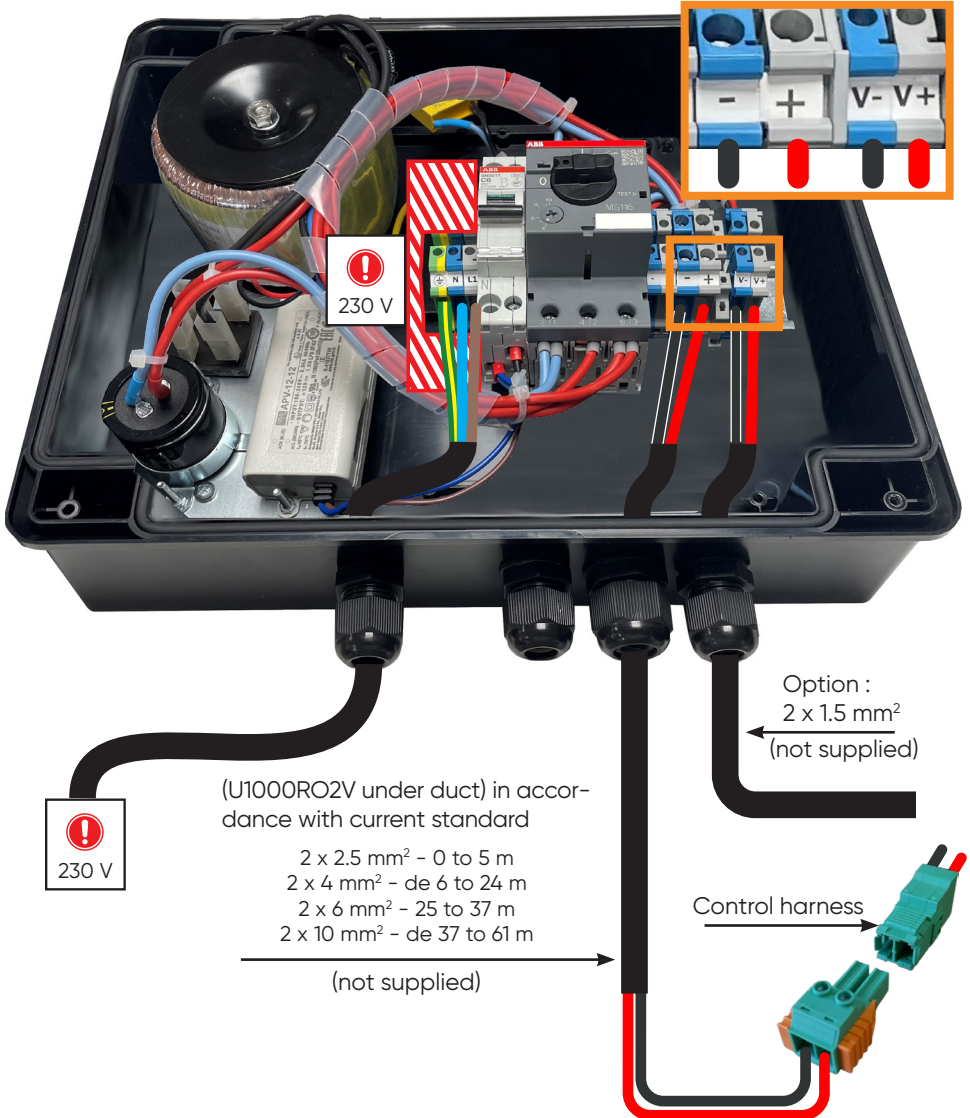
Control harness

INSTALLATION

ELECTRICAL WIRING FOR AQUA 11 CONTROL BOX



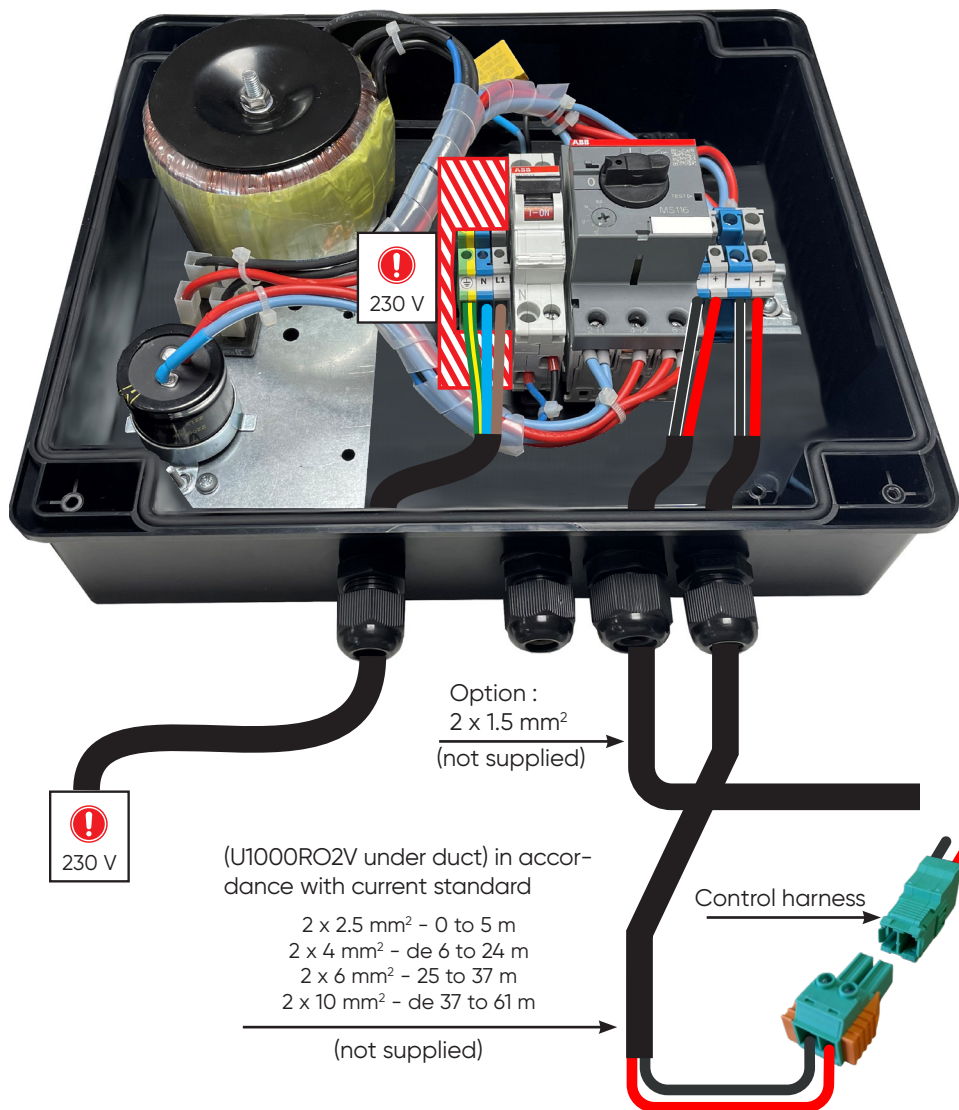
- Make sure that no-one is in the pool during the operation.
- All connections must be made off-line.



INSTALLATION

ELECTRICAL WIRING FOR AQUA 9 CONTROL BOX

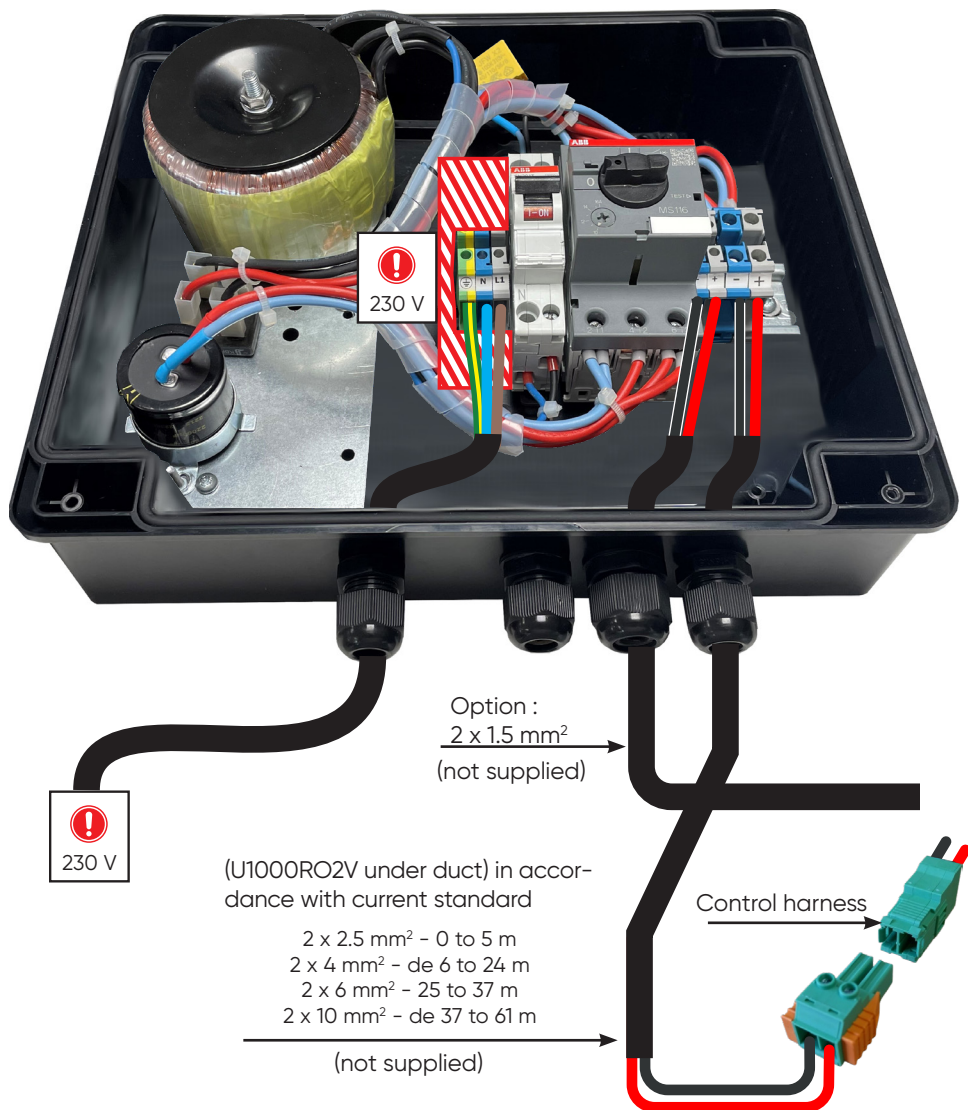
- ⚠ • Make sure that no-one is in the pool during the operation.
- All connections must be made off-line.



INSTALLATION

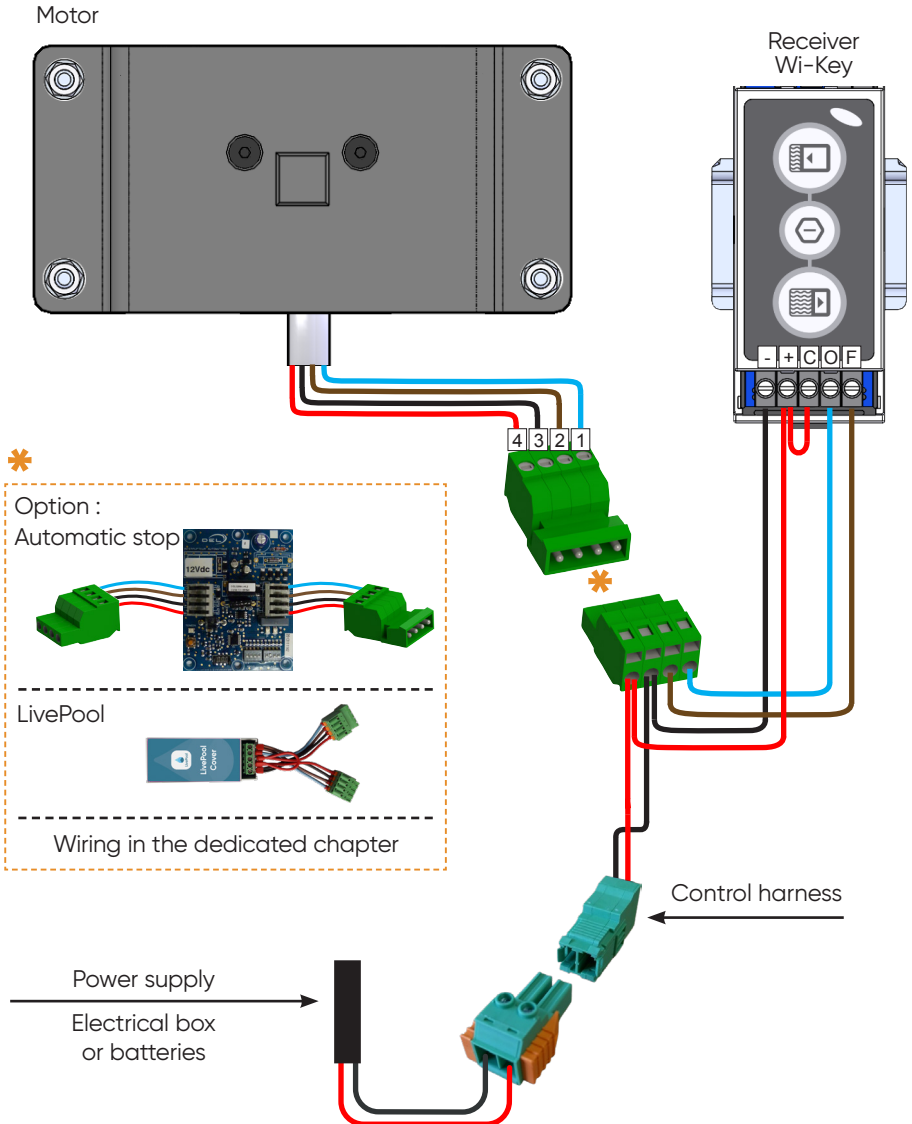
ELECTRICAL WIRING FOR AQUA 8 CONTROL BOX

- ⚠ • Make sure that no-one is in the pool during the operation.
- All connections must be made off-line.



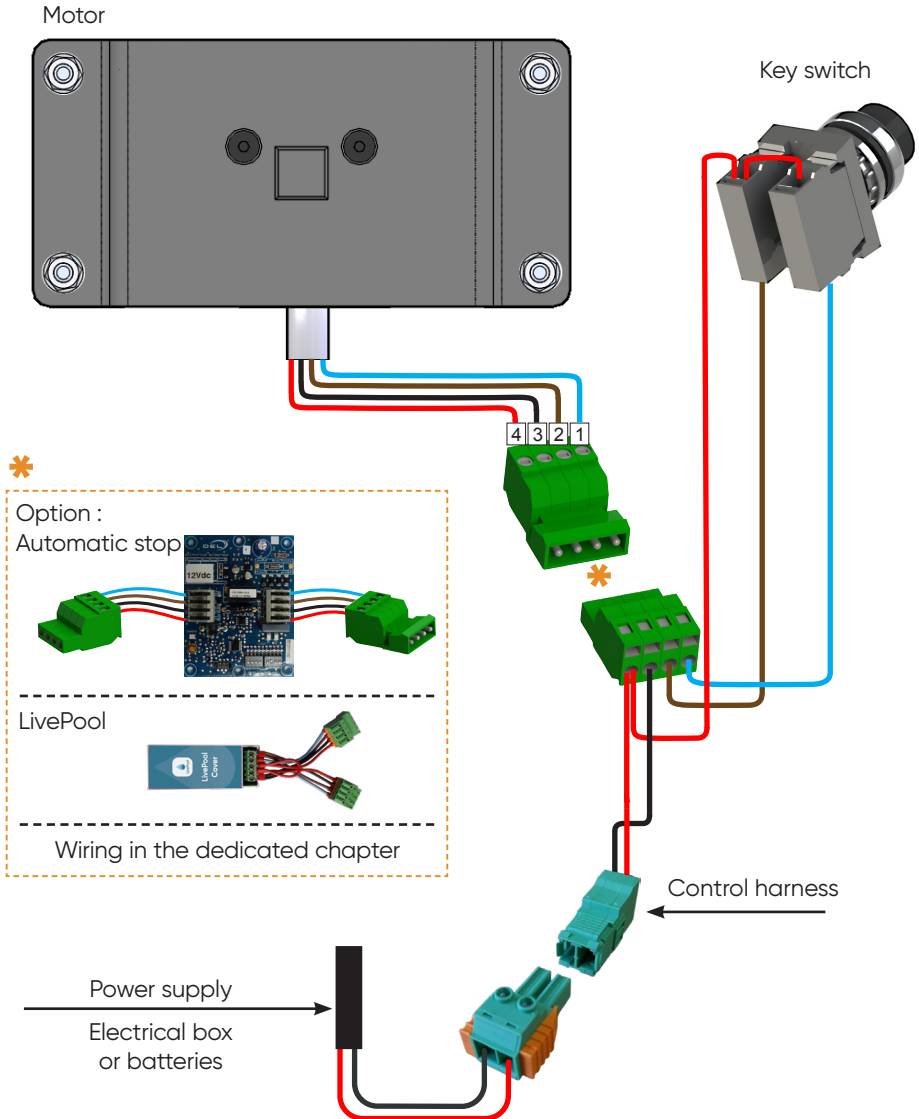
INSTALLATION

WIRING OF THE WI-KEY CONTROL HARNESS TO THE POWER SUPPLY AND THE MOTOR



INSTALLATION

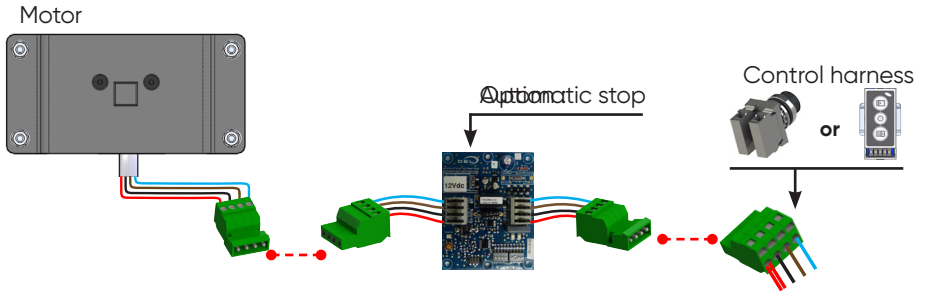
WIRING OF THE KEY SWITCH HARNESS TO THE POWER SUPPLY AND THE MOTOR



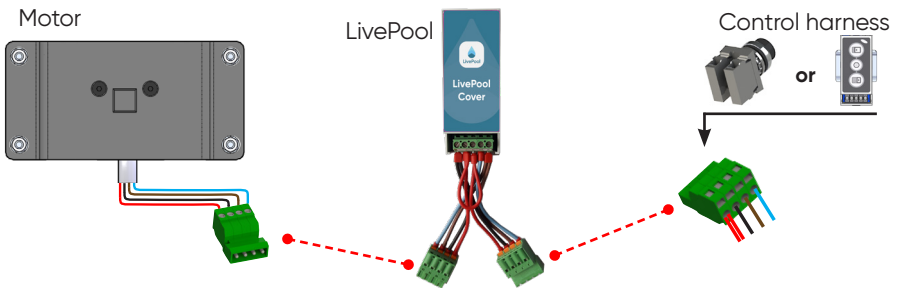
INSTALLATION

WIRING OF THE OPTIONS

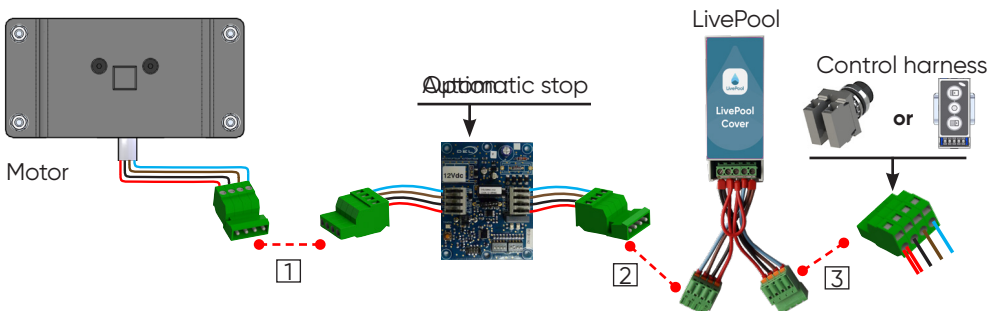
WIRING OF THE AUTOMATIC SWITCH OPTION



WIRING OF THE LIVEPOOL OPTION



WIRING OF THE AUTOMATIC SWITCH AND LIVEPOOL OPTIONS



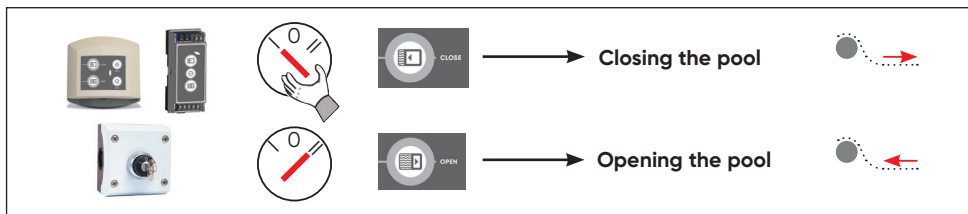
1 2 3 Follow the wiring order

INSTALLATION

- ❗ Any person working on electrical parts must be qualified and must wear PPE (personal protective equipment): gloves, glasses, mats, etc.
- ❗ Please note that the flap control buttons in the box (Wi-Key receiver) must only be used by a person who is sure that there is no risk and that no one enters the pool during the operation.

AFTER COMPLETE WIRING

▶ CHECK THE DIRECTION OF MOVEMENT OF THE COVER WITH THE SWITCHES



- ❗ If the control logic is not respected, check the wiring of the installation.

SERVICING/MAINTENANCE

SPARE PARTS

Online catalogue :



<https://www.my-cfgroup.fr/fr/pièces-detachees>

TROUBLESHOOTING GUIDE



Above-ground pool cover :

<https://view.publitas.com/cfgroup/quick-troubleshooting-guide-electrical-above-ground-cover/>



Wi-Key :

<https://view.publitas.com/cfgroup/quick-troubleshooting-guide-Wi-Key/>

WARRANTY CONDITION

Log on to www.del-piscine.fr to consult all our guarantees.



<https://www.del-piscine.fr/rechercher-une-garantie>

SAFETY ADVICE

Please read the recommendations set out below with care.

WARNING

Swimming pools can represent a serious danger for your children. Drowning can happen very quickly.

Children who are close to a swimming pool need to be watched constantly and actively, even if they know how to swim.

Learn lifesaving skills.

The physical presence of an adult is absolutely essential whenever the pool is open.



Memorise the telephone numbers for the emergency services and ensure that they are displayed close to the pool.

☎ 18 (in France) or 112

FIRE SERVICE

☎ 15

**AMBULANCE
SERVICE**

(write the number that applies in your region)



POISON CONTROL

CENTRE

SAFETY ADVICE

- This section is by no means a replacement for common sense or individual responsibility. Its aim is not to replace the vigilance of parents and/or responsible adults, who remain the essential factor in ensuring the protection of young children.
- **Warning:** safety is only guaranteed when the cover is closed, locked and correctly installed in compliance with the manufacturer's instructions.
- The cover must systematically be closed if you are absent from home, even for a very short period.
- Check that no persons and no foreign objects are in the pool before and during opening and closing operations.
- Store the devices and/or tools needed to operate the covers out of the reach of children.
- Operation of the mechanism must only be carried out by a responsible adult.
- With the exception of movable floors, movable terraces and the covering elements provided for this purpose (e.g. gratings), do not climb, walk or jump on a safety cover.
- Take all necessary measures to prevent access to the pool for young children until the cover is repaired or when a malfunction is observed that prevents closing or in case of temporary unavailability of the equipment or the pool.
- Children must not play with the appliance.

A child can drown in less than 3 minutes, no type of protection can ever replace the watchful eye and vigilance of a responsible adult.

RECYCLING

PACKAGING



Dispose of the packaging in line with current rules and regulations.

END OF LIFECYCLE



- Do not put your scrapped equipment or used batteries in with unsorted household waste.
- You are responsible for disposing of all of your waste, in particular electrical and electronic equipment by taking it to a collection point where recycling and valorisation are carried out.
- Some products may contain substances that are dangerous for the environment. You need to ensure that these are eliminated or neutralised.
- Make sure that you are aware of all existing recovery and collection systems.



Discard the manual in line with the current regulations.



Adresses sur quefairedemesdechets.fr

NOTES

NOTES

DEL SAS
ZA LA CROIX ROUGE
35530 BRÉCÉ - FRANCE

☎ +33(0)9 70 72 5000 / INFO.FR@CF.GROUP

STAMP

A brand by



ORIGINAL INSTRUCTIONS

/ 03 2026

A-DOTE03016