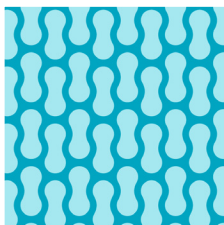




# INSTALLATION GUIDELINES

INSTALLATION / SERVICING / MAINTENANCE / SAFETY ADVICE



**DEL**

**GEOBUBBLE BUBBLE COVERS**

SUNDOWN / MIDNIGHT / EXTRASUN

---



# CONTENTS

## **PLEASE READ THESE INSTRUCTIONS CAREFULLY AND KEEP THEM FOR FUTURE REFERENCE**

Please read this manual carefully to help you understand all of the information and to ensure safe installation, use and servicing. We are not held liable for any damage arising due to a failure to respect the instructions set out in this manual. Installation of the counterweights.

DESCRIPTION.....	p. 4
Informations .....	p. 4
Packaging.....	p. 4
INSTALLATION.....	p. 5
Fitting the cover.....	p. 5
UPKEEP/MAINTENANCE.....	p. 7
Water level of the pool.....	p. 7
Filtering and treating the water.....	p. 7
Temperature.....	p. 8
Chlorine .....	p. 8
PH .....	p. 8
The effects of the sun .....	p. 8
Upkeep (the customer's responsibility) .....	p. 9
Maintenance (at least once a year) .....	p. 10
Wintering.....	p. 11
SAFETY TIPS .....	p. 12
RECYCLING .....	p. 14

## DESCRIPTION

### INFORMATIONS

- The bubble cover floats on the water.
- The bubbles create a mattress of insulating air, reducing heat loss.
- The cover reduces evaporation significantly, reducing water and heat loss.
- Translucent models: allow solar power into the pool.
- Opaque models: limit photosynthesis in water.
- The protection provided reduces the need to treat the water.
- The covers have eyelets for easy handling and can be used with a winder.
- Bungee cords are delivered with the winders, unless the "straps for smooth mat" option has been ordered.

### PACKAGEAGE



1 PACKAGE  
PACKAGE: 1.20 x 0.50 x 0.50 m – 15 to 40 Kg

### POSE



2 persons



2 heures

# INSTALLATION

## FITTING THE COVER

The bubble cover is placed on the surface of the water.  
The bubbles are in contact with the water.



- **Never pull on a ladder or accessory, as this may cause the base to tear.**
- **Handle the cover only by the eyelets if there are any; otherwise take care not to pull on the cover at a point that could cause it to tear.**

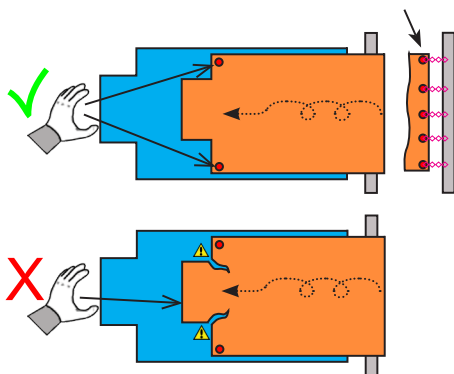


## CLOSING

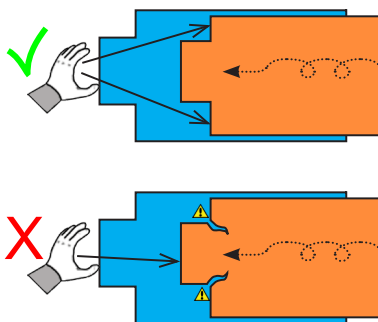
Unfold the bubble cover over the pool, making sure that it does not rub against abrasive elements.

### WITH A WINDER

The cover must be fitted with eyelets on the winder side.



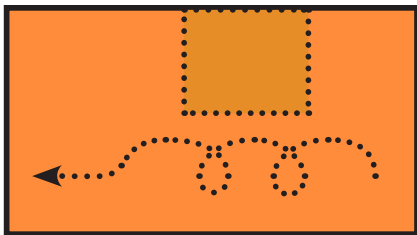
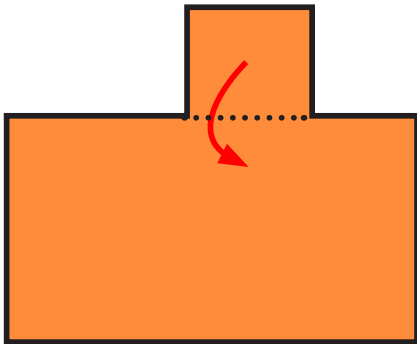
### WITHOUT A WINDER



# INSTALLATION

## ➤ OPENING

- Roll the bubble cover up, ensuring it does not rub against abrasive elements.
- Above all, do not fold it.
- For covers with a side ladder, fold the ladder part down onto the cover before rolling it up.
- Store the cover out of direct sunlight.
- Protect the cover with the protective tarpaulin.
- With a winder: Refer to the instructions for affixing to the cover.



## SERVICING/MAINTENANCE



**During any intervention, the technician must wear PPE (personal protective equipment): gloves, goggles, mat, etc...**

### WATER LEVEL IN THE POOL

- In order to ensure maximum safety and correct operation of the rewinder, always check that the water level in the pool remains constant and complies with the manufacturer's requirements (for greater comfort, use an overflow and a water level regulator).
- A water level that is too high is due to the overflow being obstructed by leaves or other items.
- Recommended water level: between 7 cm and 15 cm below the top of the coping.

### WATER FILTRATION AND TREATMENT

- Programme filtration to take place at a time when the sun is shining on the pool and ensure that it is set to work all the time when the water reaches 25°C.
- In order to ensure that your installation will last, the water in the pool must be correctly treated in compliance with the applicable standards and recommendations (NF EN 16713-3).
- The pH, hardness and alkali levels of the water must be checked and adjusted as often as is necessary (although you will need to ensure that you don't correct these three parameters independently of each other but do so using the Taylor table and provide the water with balance with regard to the three parameters analysed).

# SERVICING/MAINTENANCE

## TEMPERATURE

- Heat can shorten the life of the cover and encourage the growth of algae.
- Remove the cover when the water temperature reaches around 28/30°C.
- Remove the cover when the water temperature falls below 5°C.

## CHLORINE

- The bubble cover helps maintain chlorine levels in the water for longer. Too much chlorine will damage the bubbles in the cover, reducing its lifespan. So we recommend monitoring chlorine levels frequently.
- If you carry out shock chlorination in the pool, the bubble cover must be removed from the water for at least 48 hours.
- Likewise, if you have over-chlorinated the water, remove the cover. Do not put it back on until chlorine levels have returned to normal.

## PH

- A pH that is too low, i.e. too acidic, can shorten the lifespan of your cover. Similarly, a pH that is too high, i.e. too basic, can also shorten the life of your cover and cause it to shrink. We therefore recommend monitoring the pH frequently.
- If the pH is below 6.8 or above 7.3, remove the bubble cover and do not put it back on until the pH has returned to normal.

## THE EFFECTS OF THE SUN

- A rolled-up cover exposed to the sun, even for a short time, heats up significantly. Each roll of the rolled up cover has a greenhouse effect on the next roll. The bubble degrades extremely quickly. The cover's protective UV coating is gradually degraded by the sun.
- The bubbles must always be hidden from the sun: expose the smooth side to the sun.
- To prevent the rolled-up cover from being exposed to the sun, use a protective cover.

## SERVICING/MAINTENANCE

### SERVICING (customer's responsibility)

- Carry out a deep clean of the cover twice per year (the first time in the year it is used and prior to Wintering). This is even more important if the water in the pool is limestone. In this case, use a descaling cleaning product (see catalogue) and rinse using a hose.
- Do not allow leaves to accumulate and decompose on the cover.
- Clean the cover regularly by removing it from the pool and placing it flat on a suitable surface (watch out for plants and sharp objects that could damage the cover). Rinse both sides of the cover under running water and, if necessary, clean the dirtiest areas with a non-abrasive sponge (soak the sponge in pool water line cleaner if necessary).
- Do not use abrasive products or solvents to clean the cover.
- It is best to inspect the entire system if the cover is forced to bear unexpected weight at any time (fall).
- Carry out an annual check of the straps.
- Metal components must be cleaned and lubricated regularly to ensure that their operation is not impaired, which could present a risk (foot injuries in the event of an impact or fall). In the event of damage, replace defective parts with original ones.

# SERVICING/MAINTENANCE

## MAINTENANCE (ONCE PER YEAR AT LEAST)

- This product does not have any wear parts requiring replacement. However, if you notice that certain parts are deteriorating, please ensure that they are replaced.
- All spare parts must come from the manufacturer or comply with standard NF P90-308.
- Check that the installation is working correctly.
- Inspect the cover thoroughly.
- At the start of each season and in the event of an accident (a falling object, hail on the cover, abnormal stress on the cover, etc.), check that the cover has not suffered any visible damage likely to compromise its safety (cracks, holes, deformations, etc.). If necessary, replace parts or the entire roof.
- Check the state of the straps (seams) and in particular the wear on the anti-abrasion sleeve. If the latter is no longer fulfilling its role of protecting the strap against abrasions from the pool rim, then replace it.
- Customer service: contact details on back page of document.

## ▶ EACH TIME IT IS USED

- Carry out a visual check of the fastening and drive components.  
every 3 months

## ▶ EVERY 3 MONTHS

- Carry out a complete cleaning.

## ▶ EVERY 4 MONTHS AND AFTER ANY EXCEPTIONAL EVENT (FALL, HEAVY RAIN, STORM, SNOW, PARTICULAR IMPACT, ETC.)

- Carry out a thorough check of all the components of the cover (condition and assembly of fabric, seams, straps, ratchets, hooks, anti-abrasion pads, etc.).

## SERVICING/MAINTENANCE

### WINTERING

- We recommend rinsing both sides of the bubble cover to remove any chemical residues that could damage it.
- Dry the bubble cover before storage to prevent the formation of mould, which could weaken the bubbles.
- Do not store the bubble cover on topsoil: it could get dirty and pollute the pool, and damage the soil.

## SAFETY ADVICE

Please read the recommendations set out below with care.

### WARNING

**Swimming pools can represent a serious danger for your children. Drowning can happen very quickly.**

**Children who are close to a swimming pool need to be watched constantly and actively, even if they know how to swim.**

**Learn lifesaving skills.**

**The physical presence of an adult is absolutely essential whenever the pool is open.**



Memorise the telephone numbers for the emergency services and ensure that they are displayed close to the pool.

**☎18** (in France) **or 112**

**FIRE SERVICE**

**☎15**

**AMBULANCE  
SERVICE**

(write the number that applies in your region)



**POISON CONTROL**

**CENTRE**

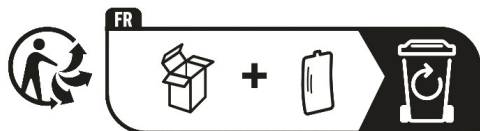
## SAFETY ADVICE

- This section is by no means a replacement for common sense or individual responsibility. Its aim is not to replace the vigilance of parents and/or responsible adults, who remain the essential factor in ensuring the protection of young children.
- **Warning:** safety is only guaranteed when the cover is closed, locked and correctly installed in compliance with the manufacturer's instructions.
- The cover must systematically be closed if you are absent from home, even for a very short period.
- Check that no persons and no foreign objects are in the pool before and during opening and closing operations.
- Store the devices and/or tools needed to operate the covers out of the reach of children.
- Operation of the mechanism must only be carried out by a responsible adult.
- With the exception of movable floors, movable terraces and the covering elements provided for this purpose (e.g. gratings), do not climb, walk or jump on a safety cover.
- Take all necessary measures to prevent access to the pool for young children until the cover is repaired or when a malfunction is observed that prevents closing or in case of temporary unavailability of the equipment or the pool.
- Respect the water levels designated by the manufacturer.
- Children must not play with the appliance.
- This appliance may be used by children aged 8 and over, and by persons with reduced physical, sensory or mental capabilities or lack of experience and knowledge if they have received supervision or instructions concerning the safe use of the appliance and understand the hazards involved.

A child can drown in less than 3 minutes, no type of protection can ever replace the watchful eye and vigilance of a responsible adult.

# RECYCLING

## PACKAGING



Dispose of the packaging in line with current rules and regulations.

## END OF LIFE CYCLE



- Do not put your scrapped equipment or used batteries in with unsorted household waste.
- You are responsible for disposing of all of your waste, in particular electrical and electronic equipment by taking it to a collection point where recycling and valorisation are carried out.
- Certain products potentially contain substances that are dangerous for the environment, and you need to ensure that these are eliminated or neutralised.
- Make sure that you are aware of all existing recovery and collection systems.



discard the manual in line with the current regulations.

NOTE

[illegible]

**DEL SAS**  
ZA LA CROIX ROUGE  
35530 BRÉCÉ - FRANCE

☎ +33 (0)9 70 72 5000 / [INFO.FR@CF.GROUP](mailto:INFO.FR@CF.GROUP)

STAMP

A brand by CF group



ORIGINAL INSTRUCTIONS

A-DOTE05500.L1 / 10 2023