



INSTALLATION GUIDELINES

INSTALLATION/SERVICING/MAINTENANCE/SAFETY ADVICE



DEL 

IN-GROUND POOL COVER

ROLLINSIDE SEALED TUBE VERSION

CONTENTS

PLEASE READ THESE INSTRUCTIONS CAREFULLY AND KEEP THEM FOR FUTURE REFERENCE

Please read this manual carefully to help you understand all of the information and to ensure safe installation, use and servicing. We cannot be held liable for any damage arising due to a failure to respect the instructions set out in this manual.

DESCRIPTION	p.4
Components provided	p.4
Tools required for assembly.....	p.7
Packing list	p.7
Assembly	p.7
INFORMATION.....	p.8
Ensuring the cover complies with French standards	p.8
INSTALLATION	p.9
Installation of white goods	p.9
Position of the template for sealing the beams	p. 11
Installing the motor side flange	p.13
Installation of the free side bearing	p.13
Installing the mechanical elements.....	p.14
Beam support	p.15
Installing the beams.....	p.17
Installing the Counter-weights	p.18
Installing the decking.....	p.19
Electric control box.....	p.21
Wiring for MIT 1210-3210 control box with Wi-Key control.....	p.22
Wiring for MIT 1210-3210 control box with key switch control.....	p.23
Wiring for MIT 5210-7210 control box with Wi-Key control.....	p.24
Wiring for MIT 5210-7210 control box with key switch box	p.25

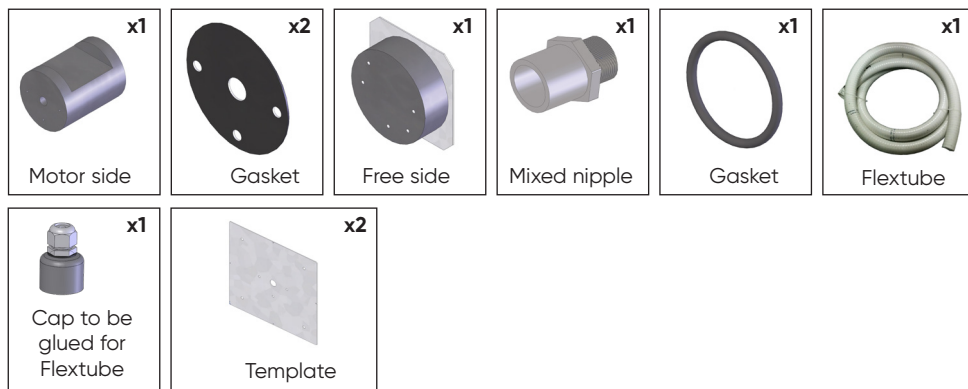
CONTENTS

Wi-Key control	p.27
Settings.....	p.30
SERVICING/MAINTENANCE	p.33
Water level in pool.....	p.33
Water filtration and treatment	p.33
Servicing (customer's responsibility)	p.34
Maintenance (1 time per year minimum)	p.35
Wintering.....	p.36
Spare parts	p.36
SAFETY ADVICE AND STANDARDS	p.37
RECYCLING.....	p.39
Packing	p.39
End of lifecycle	p.39
REGULATIONS	p.40
Standard.....	p.40
Warranty conditions.....	p.40

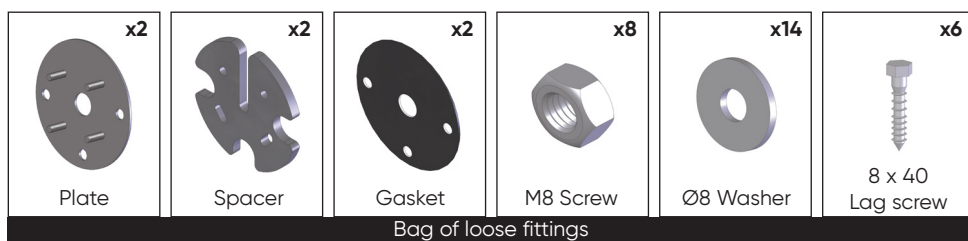
DESCRIPTION

COMPONENTS PROVIDED

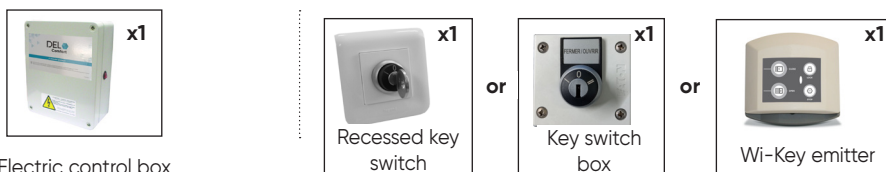
WHITE GOODS



INSTALLATION KIT

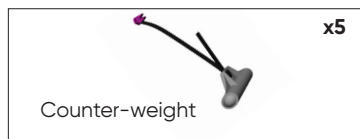


ELECTRIC CONTROL BOX AND COMMAND CONTROL

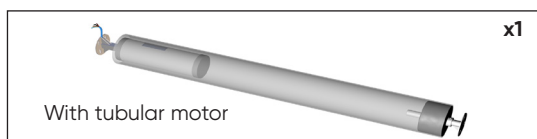


DESCRIPTION

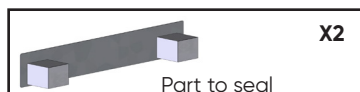
COUNTER-WEIGHT



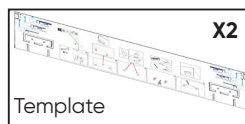
MECHANISM



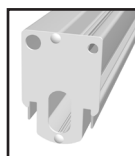
PART TO SEAL



FASTENING COMPONENTS PEGGED VERSION

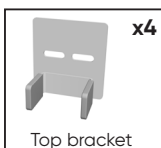
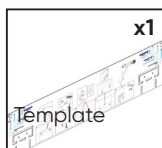


BEAM

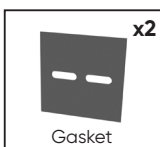
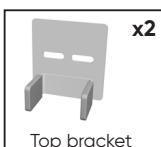
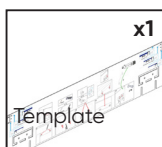


- '1 beam for the Rollinside with grating on the wall.
- 2 beams for 1-sided Rollinside.
- 3 beams for 2-sided Rollinside.'

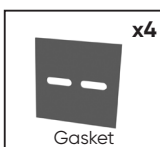
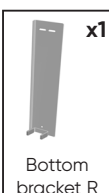
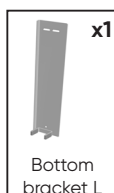
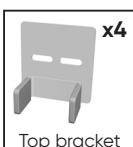
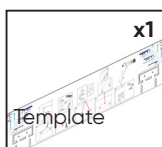
1-SIDED BEAM SUPPORT



1-SIDED BEAM SUPPORT



2-SIDED BEAM SUPPORT



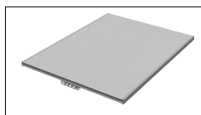
DESCRIPTION

➤ DECKING – Model according to order (1 pallet)



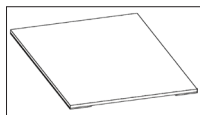
Aluminium decking to be tiled

or



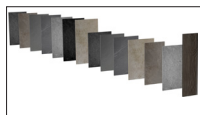
PVC

or



PVC to be covered

or



Grès Cérame

DESCRIPTION

TOOLS REQUIRED FOR ASSEMBLY



PACKING

e.g. for a 5.00 x 10 m pool with Ø3 m Roman steps

White goods:

For beam supports: 1 1.00x0.20x0.20 packing -- 10 kg

For the mechanical elements (pole): 1 0.30x0.20x0.20 packing -- 5 kg

The mechanical elements (pole) with motor protection:

1 5.00xØ0.25 m packing -- 50 kg

Installation kit + motor protection + casing + Counter-weights + fastening kits:

1 0.80x0.60x0.65 packing -- 35 kg

Beam supports:

1-sided Rollinside: 1 0.75x0.25x0.15 packing -- 4 kg

2-sided Rollinside: 1 0.75x0.25x0.15 packing -- 10 kg

Beams:

1-sided Rollinside: 2 5.10x0.17x0.12 packings -- 60 kg

2-sided Rollinside: 2 5.10x0.17x0.12 packings -- 90 kg

Decking:

1-sided Rollinside: 1 1.20x1.00x0.40 pallet -- 40 kg

2-sided Rollinside: 1 1.20x1.00x0.40 pallet -- 70 kg

Warning, Some ware : 1 Pallet delivered separately -- 44Kg/m²

ASSEMBLY



2 persons



3 hours

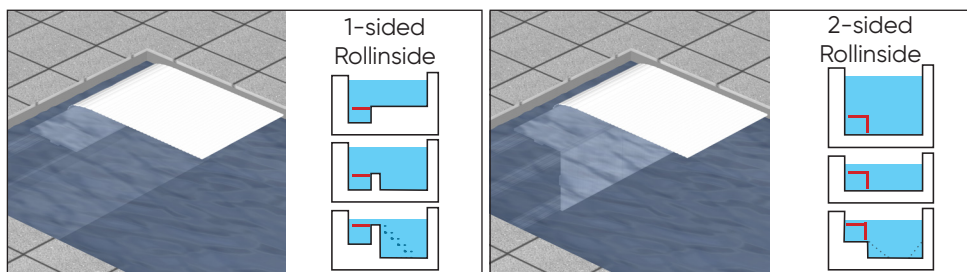
INFORMATION

For pools made of concrete, aerated concrete, hollow and solid masonry, polystyrene, with tiling or reinforced membrane waterproofing.

The Rollinside is an automatic immersed cover consisting of a mechanical device and housing that is placed below the surface of the water.

Two versions of the Rollinside are available:

- 1-sided or 2-sided casing.
- Motor protection in a dry or wet pit.
- Fastening style: With white goods or pegged façade.
- The electricity supply comes from an electric control box located in a technical room.
(Electric control boxes comply with electrical standards: C15-100/NF EN 60335/
NF EN 61000-6-3 /NF EN 55014-1).
- Limit switches can be adjusted on the motor or directly on the control box depending on the model.
- Opening and closing control is carried out via key button or Wi-Key located in a place from where the pool can be seen.
- The vertical and horizontal covering of the housing consists of several pieces of decking clipped onto beams. In the case of sandstone gratings, check that the radius of the liner on the dividing wall does not exceed 7mm, otherwise premature wear and tear of the liner may occur.

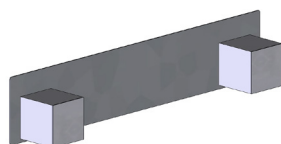


- ❗ • On infinity pools, DEL covers cannot be compatible unless the pool is equipped with a Vitalia INFINITY control box to automatically lower the water level by 2cm when the cover is closed over the pool.
- Currently, DEL pool covers including an adjustable fitting to go over a ladder on the side of the pool do not comply with standard NF P90-308.
- Unless the alarm manufacturer indicates otherwise, immersion alarms are not compatible with DEL pool covers.

INSTALLATION

INSTALLATION OF WHITE GOODS

▶ SEALED FASTENING FOR BEAM

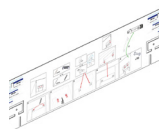


Part to seal



Gasket

▶ PEGGED FASTENING FOR BEAM



Template

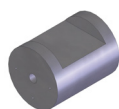


M8 12 x 60
Anchor



Gasket

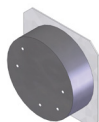
▶ FASTENING FOR REEL SYSTEM



Motor side



Gasket



Free side



Flextube



Mixed
nipple



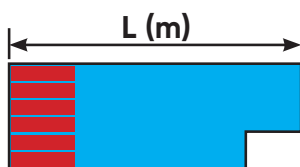
Gasket



Template



Cap to be
glued for
Flextube



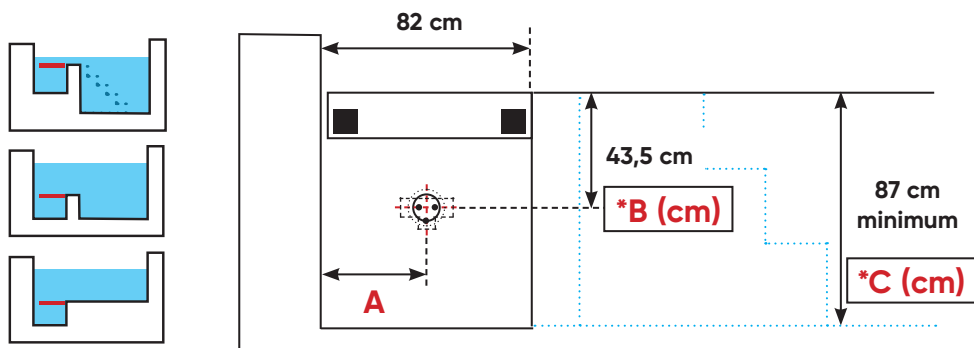
❗ In case of radius add 15cm (angle width) to dimension A

L (m)	6	7	8	9	10	12	13	14	15	16	17	18	19	20
A (cm)	26	27	28	29	31	33	34	35	35	36	37	38	39	40
*B (cm)	43.5	43.5	43.5	43.5	45	46	47	48	48.5	49	50	51	52	53
*C (cm) mini	43.5	43.5	43.5	43.5	76	78	80	81	83	85	87	88	90	91

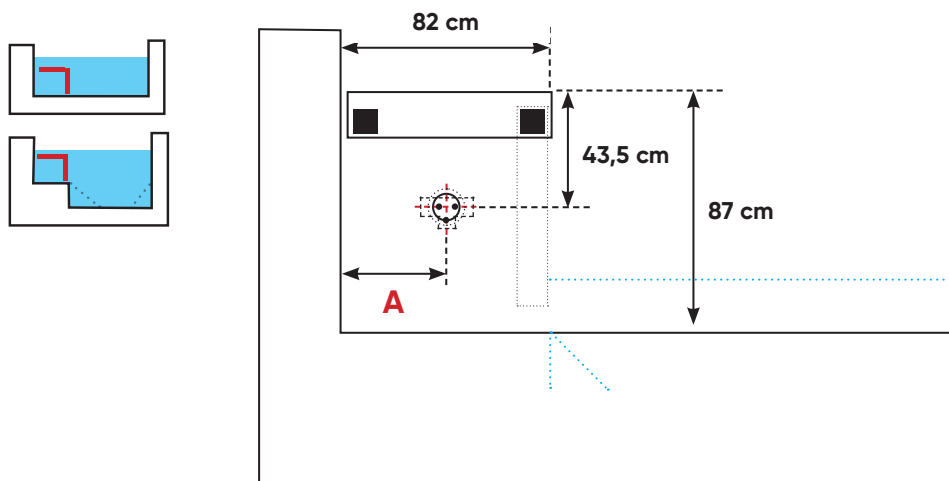
❗ *for pools over 7 m wide

INSTALLATION

► POSITIONING : 1 FACE



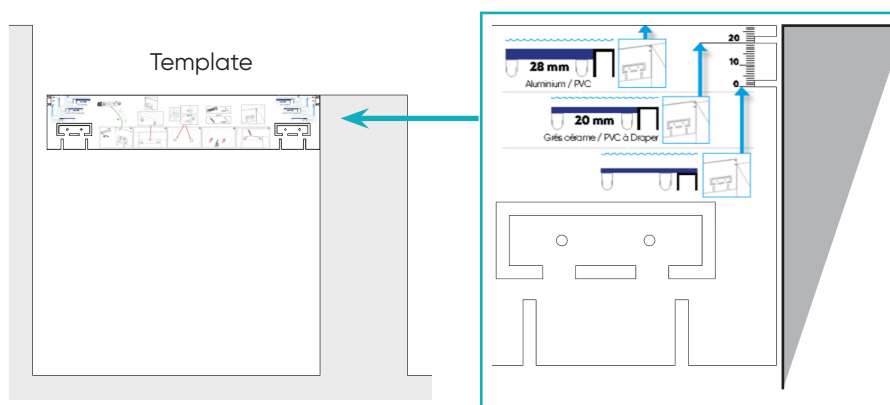
► POSITIONING : 2 FACES



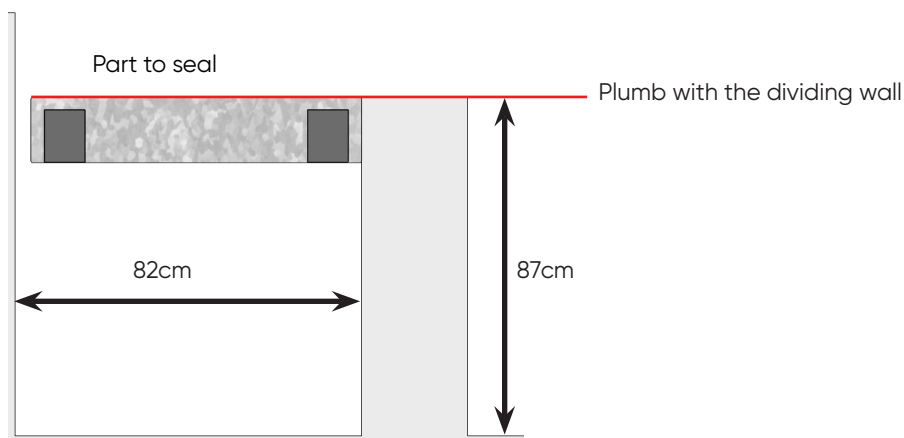
INSTALLATION

POSITION OF THE TEMPLATE OR THE BEAM EMBEDDING PIECE

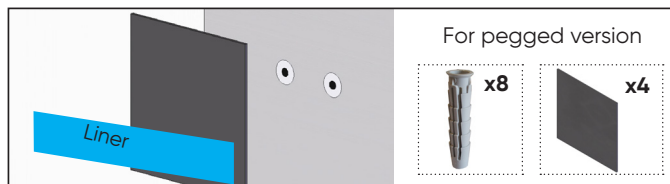
- ❗ The template is used to position the holes according to the configuration of the gratings on the pool.



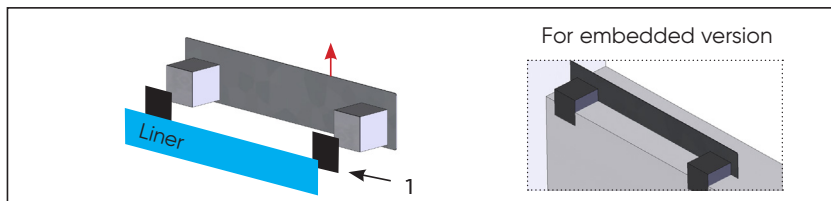
- ❗ The part to be embedded is positioned plumb with the dividing wall, whatever the configuration of the gratings on the pool.



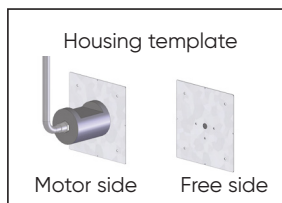
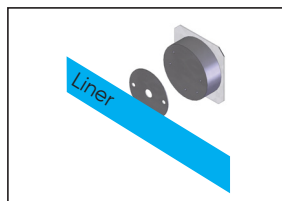
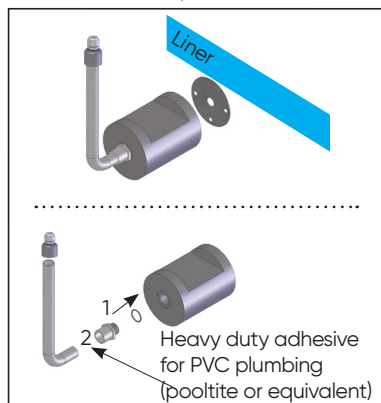
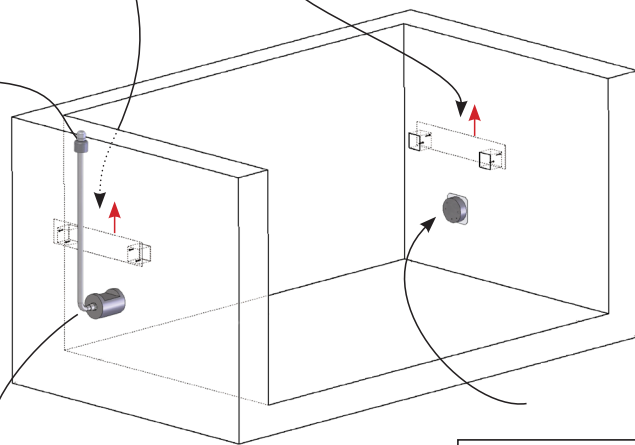
INSTALLATION



	Perforateur
	Ø12

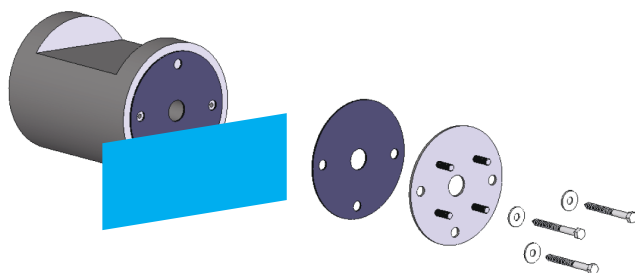
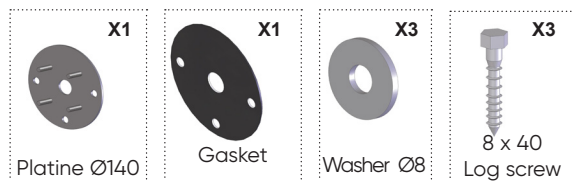


Connection box
"option"

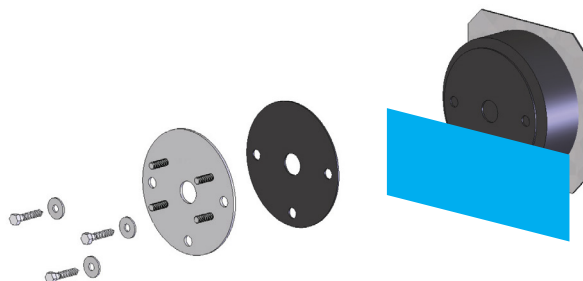
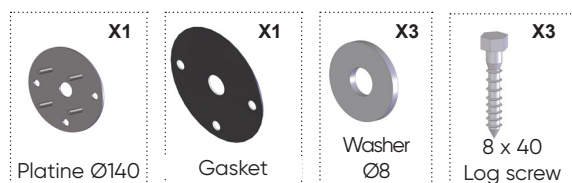


INSTALLATION

FITTING THE MOTOR-SIDE FLANGE

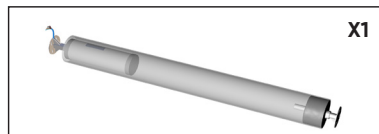


INSTALLING THE BEARING ON THE FREE SIDE

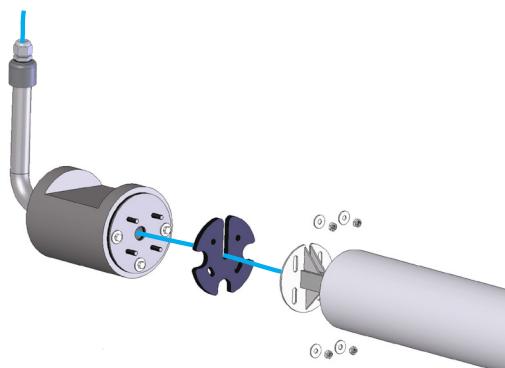
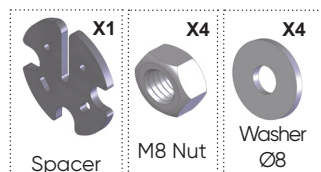


INSTALLATION

INSTALLING THE MECHANISM

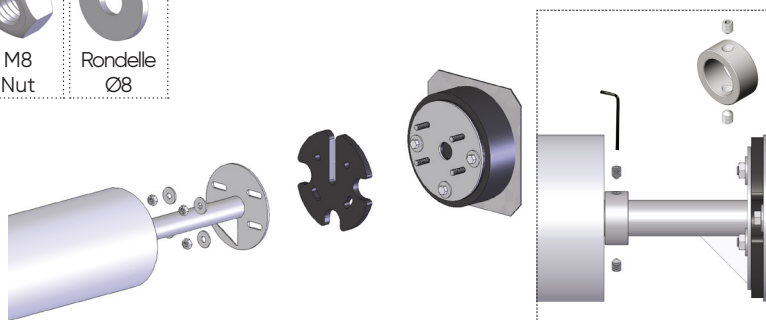
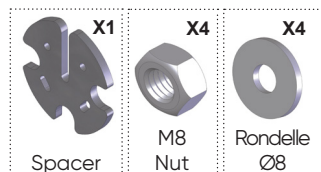


MOTOR SIDE



! Test the motor before launching.

FREE SIDE

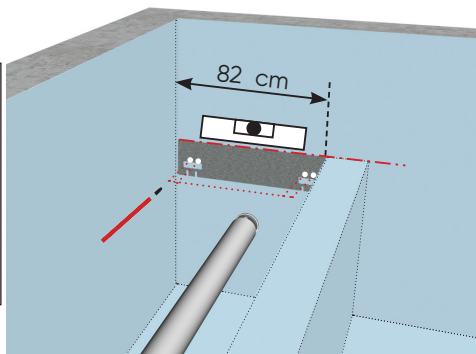
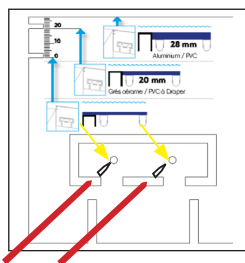
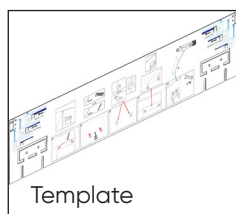


INSTALLATION

BEAM SUPPORT

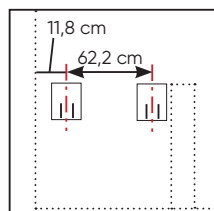
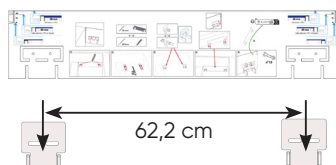
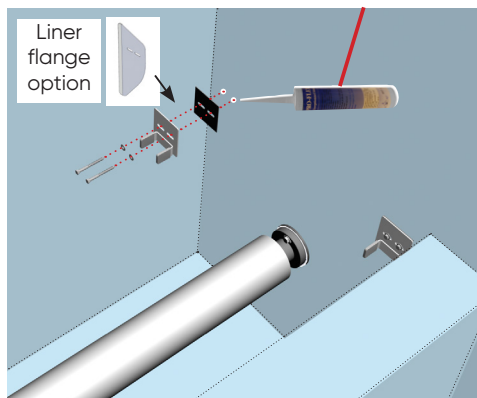
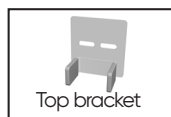
1-SIDED

Tracing



Make $\varnothing 4$ holes in the fastening bracket before installing the Lag screws.

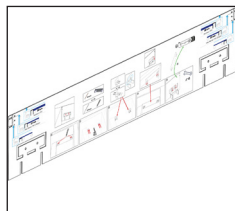
! For the pegged version, the template can help you to find the position of the anchors previously installed.
For the pegged version, fill the anchor with Proflex.



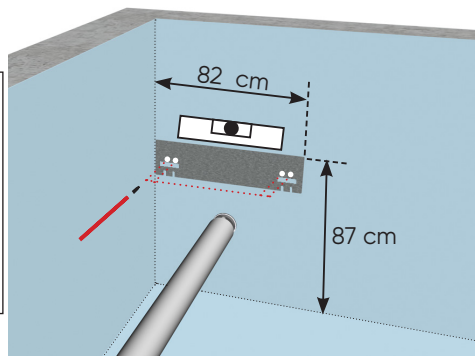
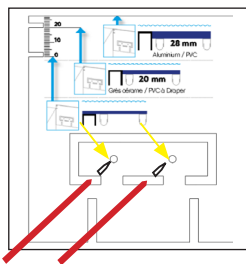
INSTALLATION

2-SIDED

Tracing

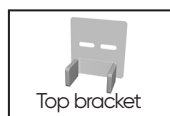


Template



Make $\varnothing 4$ holes in the fastening bracket before installing the Lag screws.

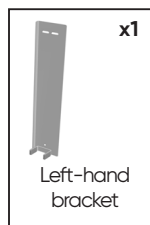
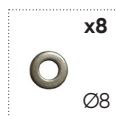
! For the pegged version, the template can help you to find the position of the anchors previously installed.
For the pegged version, fill the anchor in with Proflex.



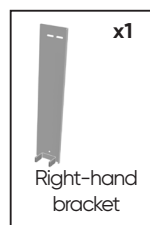
Top bracket



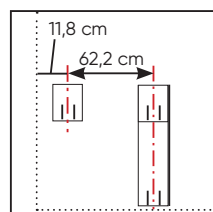
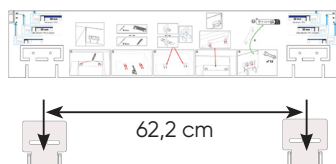
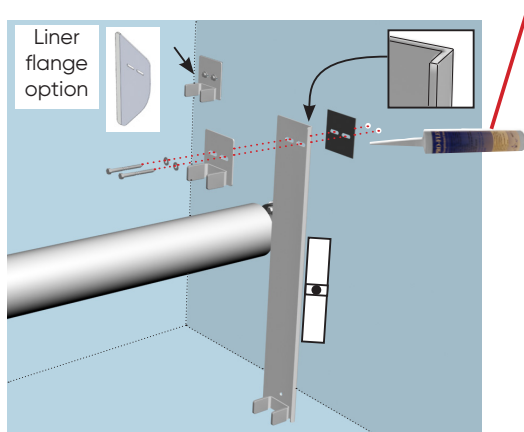
Gasket



Left-hand
bracket



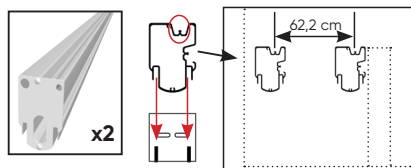
Right-hand
bracket



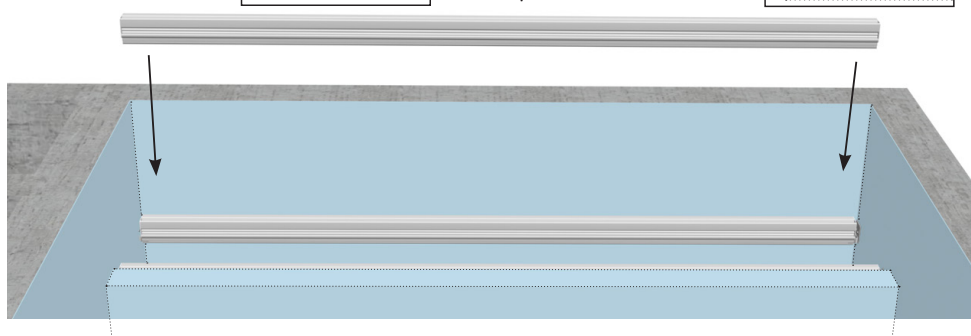
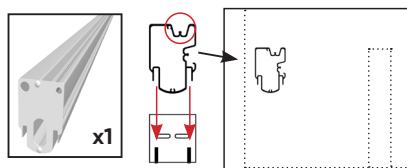
INSTALLATION

INSTALLING THE BEAMS

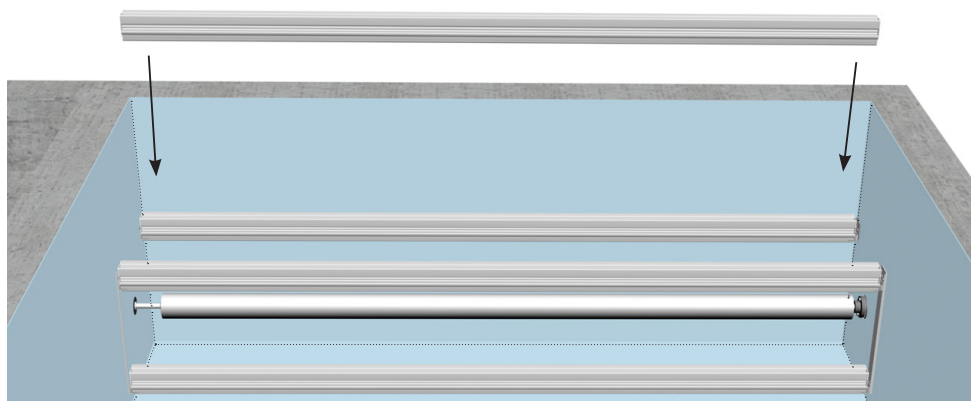
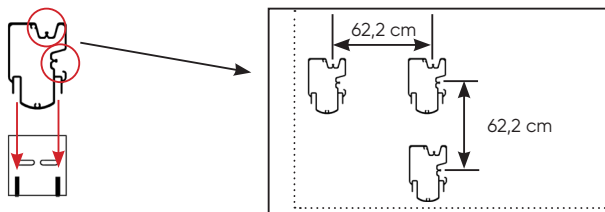
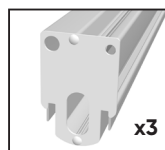
➤ 1 SIDED - 2 BEAMS



➤ 1 SIDED - 1 BEAM

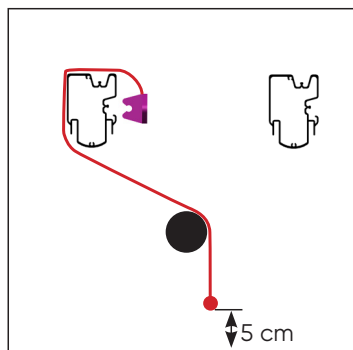
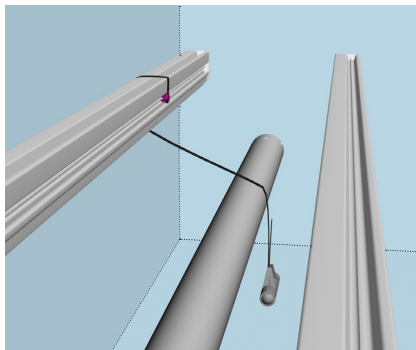


➤ 2 SIDED

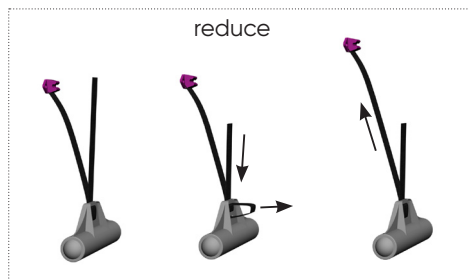
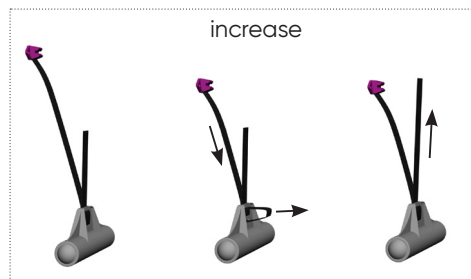


INSTALLATION

INSTALLING THE COUNTER-WEIGHTS

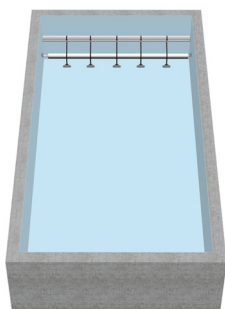


ADJUSTING THE STRAP

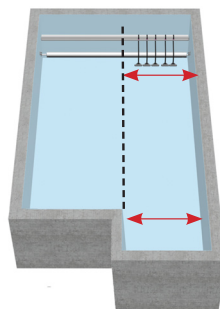


DISTRIBUTION OF COUNTER-WEIGHTS

Pools without stairs



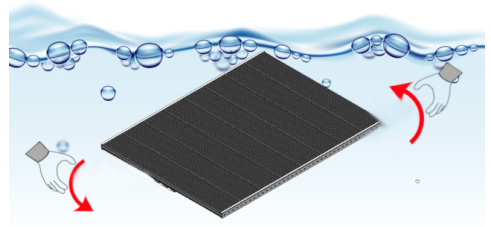
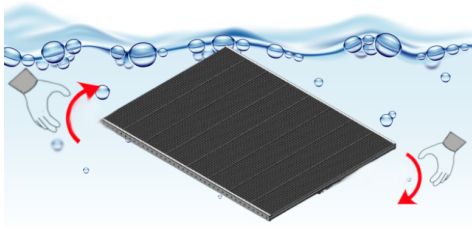
Pools with stairs



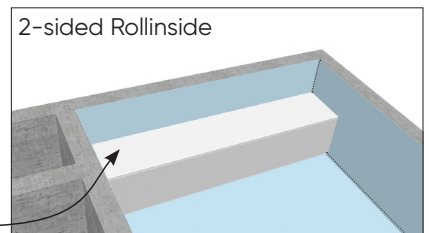
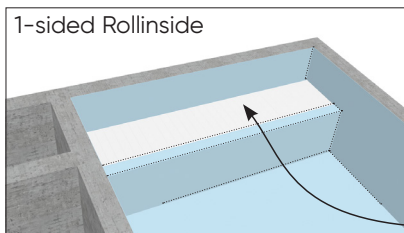
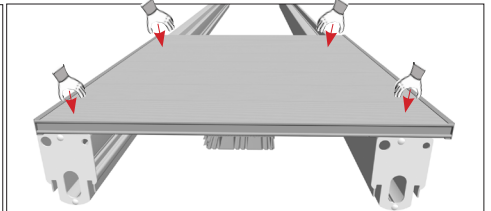
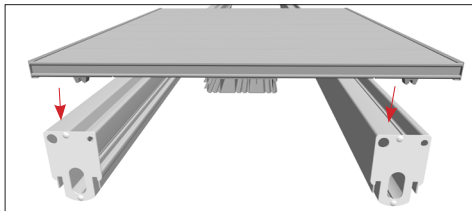
INSTALLATION

INSTALLING THE DECKING

Dip the gratings into the water to let the air escape through the holes in the sides. Remember to stir them well in the water.



Fit the gratings onto the beams.

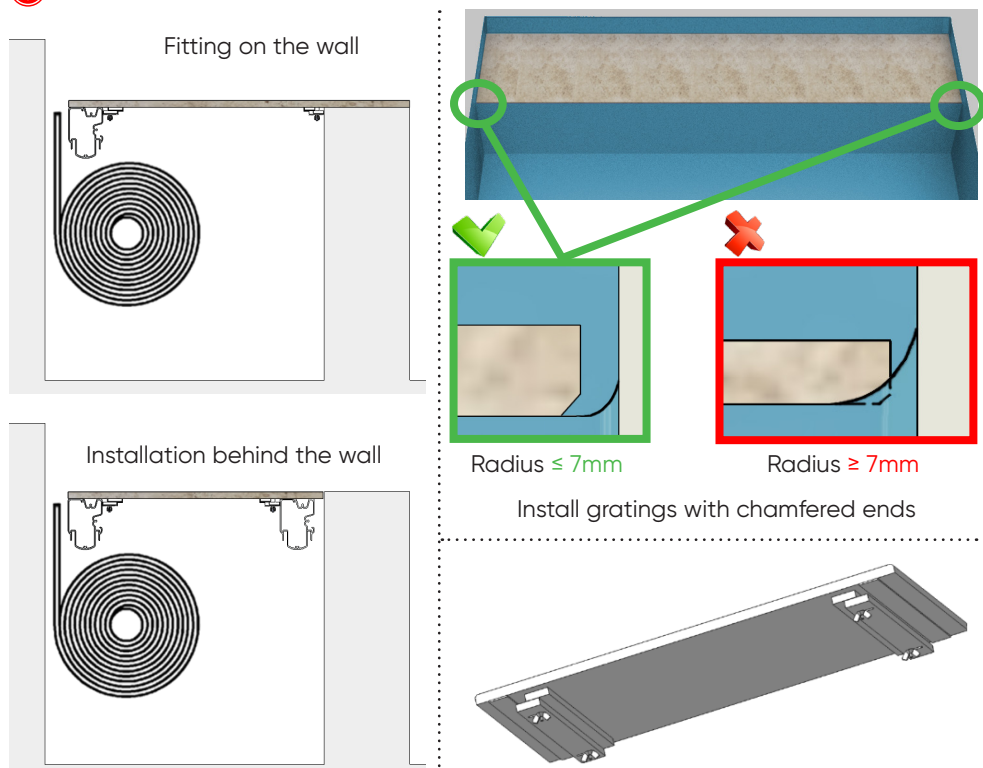


Install the horizontal decking after you have set the end-of-runs for the apron.

INSTALLATION

LAYING PORCELAIN STONEWARE GRATINGS

! Refer to the instructions supplied with the pallet.



1. Install the grating element in its housing.
2. Align the grating element with the previous ones.
3. Slide the stops against the joist and the dividing wall.
4. Tighten the 4 butterfly screws to lock the stops.

The stoneware gratings rest on the beams and have no clips.



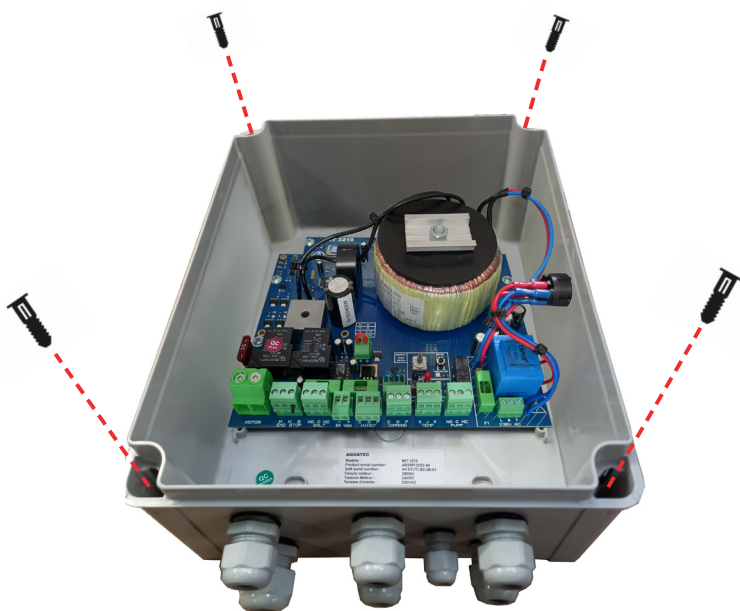
! Tighten the adjustable stops against the beam and the partition wall to lock the position of the grating.

INSTALLATION

ELECTRICAL CONTROL BOX

➤ MOUNTING THE CONTROL BOX

- The control box must be fixed to the wall of the equipment room in an easily accessible position, between 1 metre and 1.80 metres above the floor.
- The box must be securely fixed to the wall using the screws and plugs supplied with it.
- Caution: if you decide to fix your enclosure by any other means, please ensure that it is securely fixed, as the guarantee may not apply. Please note that adhesives are not considered to be a reliable means of fixing.



No warranty if box is drilled.

If the enclosure is drilled, be sure to seal the fixings.

Use the fixings supplied with the box to maintain the IP rating.

INSTALLATION

CONTROL BOX

The electrical connection of the equipment must only be carried out by a qualified professional, and they must comply with the manufacturer's instructions in addition to the following applicable standards and regulations:

- NF C15-100: Low voltage electrical installations.
- CEI 60364: Electrical installations for buildings.

Please refer to the leaflet enclosed with the control box to ensure correct installation.



Incorrect installation may result in an electric shock, or it may damage the unit. We recommend that you disconnect the control box from the electricity supply prior to any work being carried out on it.

Any specific electrical supply line must be protected by a 30 mA of type F circuit breaker along with a sufficient overcurrent protection control box.

We recommend use of a shielded cable with a nominal cross-section that is not lower than the one indicated in the following table:

Current rating of unit A	Nominal cross-section mm ²
≤0.2	Flat twin tinsel cord a
> 0.2 and ≤ 3	0.5 a
> 3 and ≤ 6	0.75
> 6 and ≤ 10	1.0 (0.75) b
> 10 and ≤ 16	1.5 (1.0) b
> 16 and ≤ 25	2.5
> 25 and ≤ 32	4
> 32 and ≤ 40	6
> 40 and ≤ 63	10

NOTE: For power cables supplied with poly-phase units, the nominal cross-section of the conductors is based on the maximum cross-section of the phase conductors at the end of the power cable that is intended to be connected to the terminals of the unit.

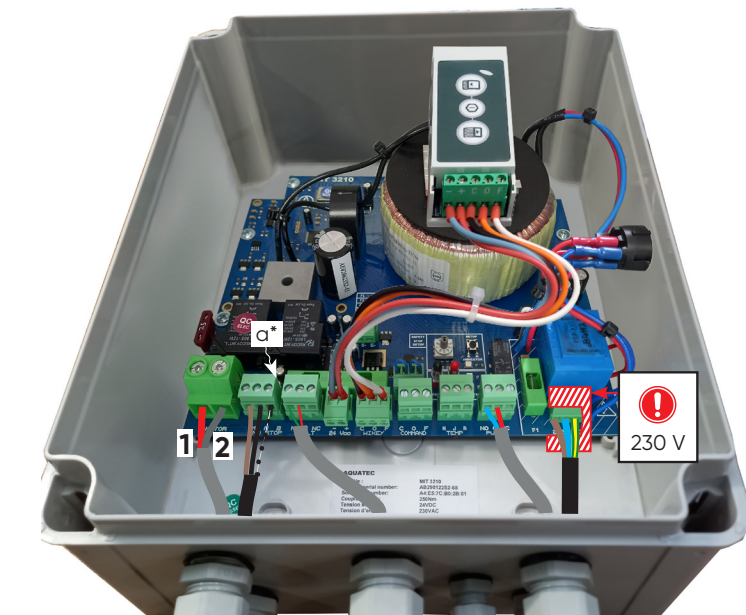
- a These cables can only be used if their length, as measured between the point where the cable or cable protector enters the equipment and the connection to the mains supply, does not exceed 2 m.
- b Cables that have the cross-section indicated in brackets can be used for mobile units if their length does not exceed 2 m.

INSTALLATION

! Ensure that there is no-one in the pool when carrying out the operation.

WIRING FOR MIT 1210-3210 ELECTRICAL CONTROL BOX WITH WI-KEY CONTROL

* see comments and diagrams on page 23

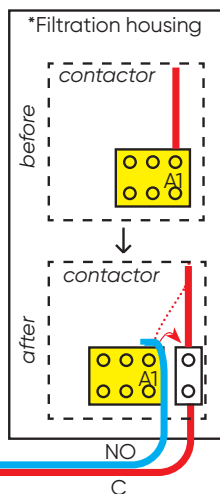


Limit switch cable

motor cable

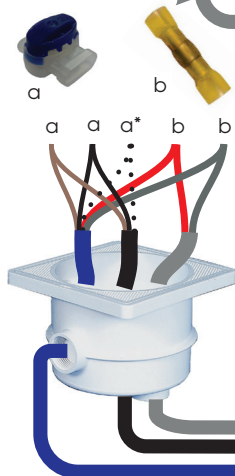
3 x 1.5 mm²

Stop flow



! 30mA residual circuit breaker

Connection
Socket **P / N / E**
230 Volts
Single-phase 50Hz



** Cover contact for electrolytic unit

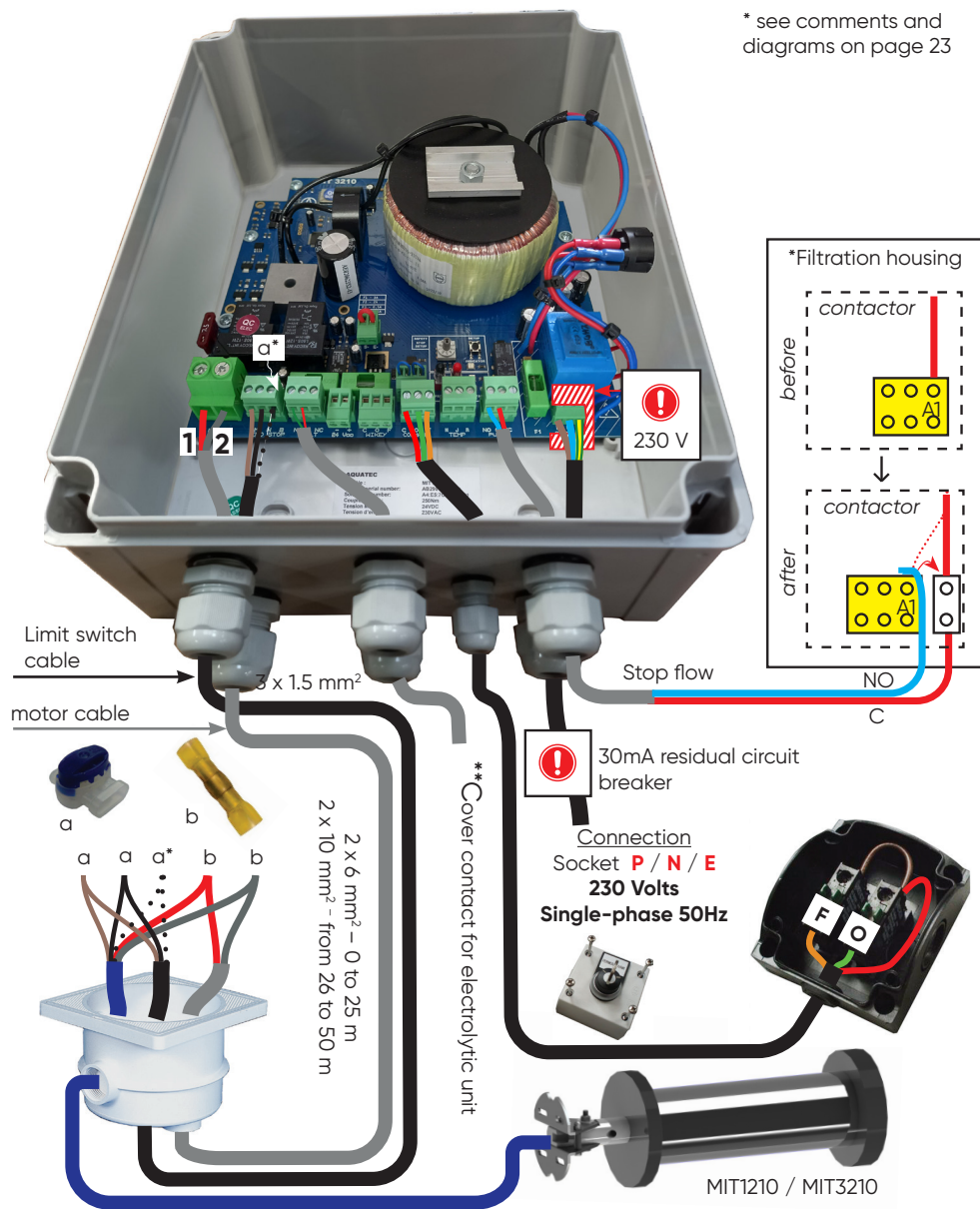


MIT1210 / MIT3210

INSTALLATION

WIRING FOR MIT 1210-3210 ELECTRICAL CONTROL BOX WITH KEY SWITCH BOX CONTROL

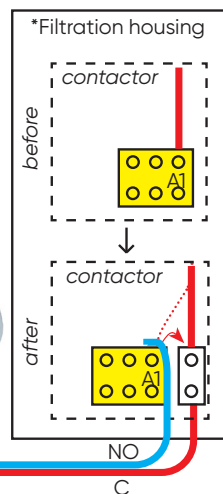
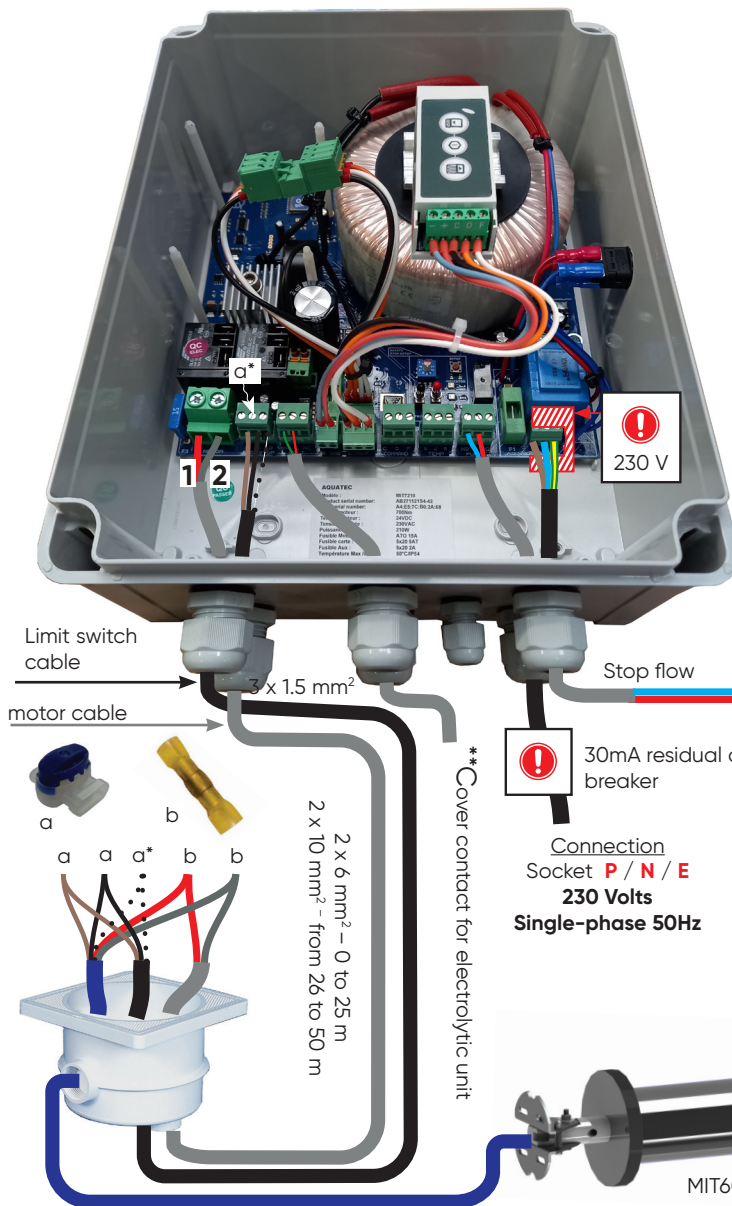
* see comments and diagrams on page 23



INSTALLATION

WIRING FOR MIT 5210-7210 ELECTRICAL CONTROL BOX WITH WI-KEY CONTROL

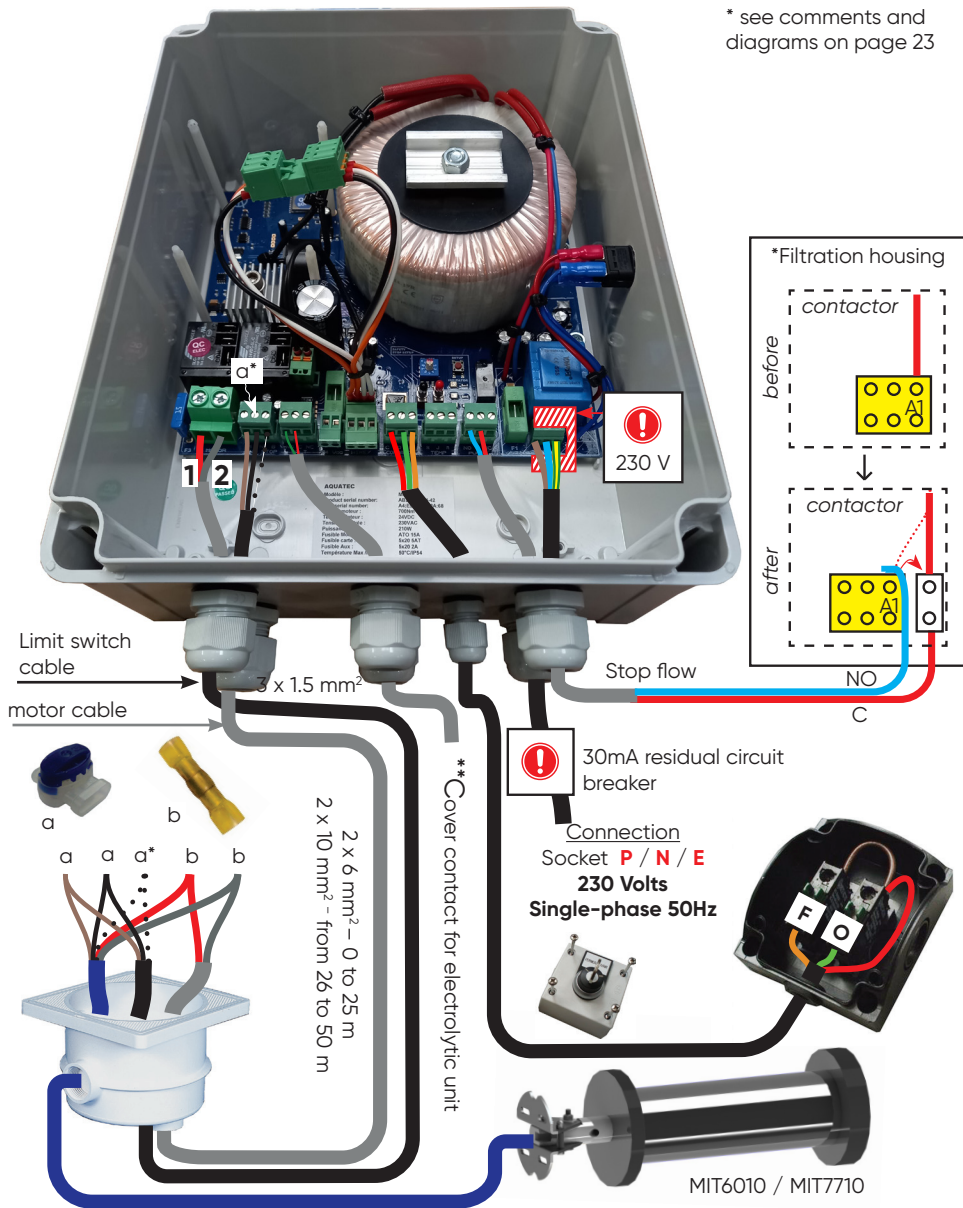
* see comments and diagrams on page 23



INSTALLATION

WIRING FOR MIT 5210-7210 ELECTRICAL CONTROL BOX WITH KEY SWITCH BOX CONTROL

* see comments and diagrams on page 23

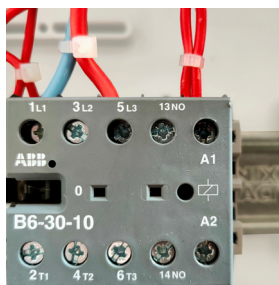


INSTALLATION

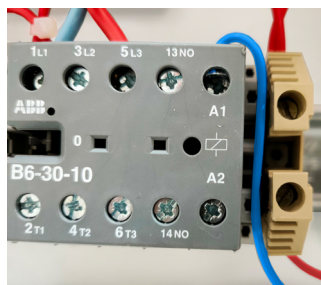
* "PUMP" terminal block Piloting the filtration pump.

When the cover is moving: Contact C-NO open (stop filtration) and contact C-NC closed (filtration).

BEFORE



AFTER



** "SALT" terminal block electrolyser control

From 80% closed: Contact C-NO closed and contact C-NC open

From 20% open: Contact C-NO open and contact C-NC closed

The position of the dry contact is saved in the memory in case power to the control box is ever switched off.

a* : Wire may or may not be present according to the type of motor.



Its location must allow you to check that no-one has entered the pool during the operation.





We advise you to put some waterproofing gel in the Junction box once the wiring is completed.

INSTALLATION

WI-KEY CONTROL



Flashing red/green = transmitter locked
See transmitter unlocking procedure page 29

	 Receiver	 Transmitter
Manufacturer	DEL	DEL
Reference	Wi-Key receiver	Wi-Key transmitter
Category	3 (EN 300220-1)	2 (EN300220-1)
Range	50 m open field range	50 m open field range
	25 m through a concrete wall	25 m through a concrete wall
Power supply	12 to 48 Vcc 30mA max	2 batteries, 1.5V AAA
Protection rating	IP40	IP54

The transmitter must be set outside of the volume 0 position (volume 0 is the part that is underwater, even if immersion is temporary).

The distance between the transmitter and the receiver must not exceed:

- 50 m open field range
- 25 m behind a single wall
- 15m behind multiple walls or a particularly thick wall.

Frequency bands used by the transmitter-receiver: 868MHz to 868.6MHz

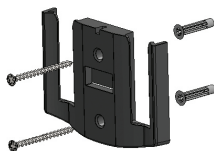
Maximum power of the radiofrequency: 10mW

We advise you to check the transmitter-receiver connection prior to fastening the elements into place.

INSTALLATION



- It must be located in a place that allows the operator to check that no-one is in the pool during the operation.
- It is compulsory for the locking "bar" to be installed and bolted into place.
- Before fastening the control box, ensure that the transmitter is communicating with the receiver.



The bracket must be fastened to a fixed base.



Close



Open



Lock keypad



Stop current operation

CONNECT A NEW TRANSMITTER

Receiver

1



Indicator light

F

STOP

O

Press "STOP" and hold the switch down, then press "O" for more than 3 seconds OK when the "Indicator light" flashes green.

Connection of a new transmitter must be carried out within the following 30 seconds.

INSTALLATION

Emitter

2

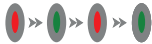


Press "STOP" and hold the switch down, then press "O" for more than 3 seconds OK when the "Indicator light" flashes red/green.

Connection of a new emitter must be carried out within the following 30 seconds.

LOCK WI-KEY

- Hold  for more than 3 seconds until the indicator flashes





 = **system locked**

UNLOCK WI-KEY

- Press  and hold
- At the same time: press successively on the following three switches:



- The  indicator light remains on  = **emitter unlocked**

	Green LED	--->	Wi-Key unlocked
	Flashing green/red LED	--->	Wi-Key locked
	Orange LED	--->	Battery level low
	Red LED	--->	Batteries need to be changed (2xLR03)

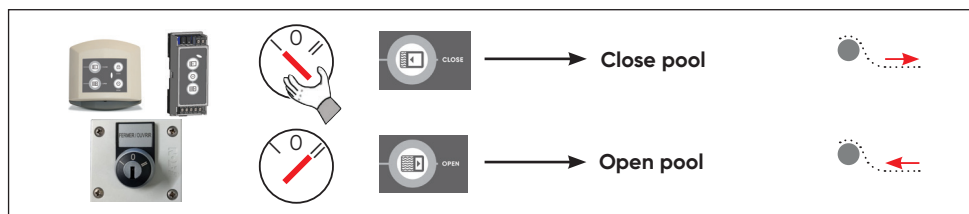
INSTALLATION

❗ Any person carrying out work on the electrical parts must be qualified and wear PPE (personal protective equipment): gloves, goggles, mat, etc...

❗ **Warning:** use of the pool cover control switches present in the housing (Wi-Key receiver) must only be carried out by a person who is absolutely certain that there is no risk and that no-one will enter the pool during the operation.

SETTINGS

➤ CHECK WIRING



If the control logic is not respected, check the wiring of the installation.

➤ PROGRAMMING THE LIMIT SWITCHES

1. To save the starting position reference, place the cover in the open position. Use forced mode if required by setting the "FORCED" switch to ON.
2. Put the "FORCED" switch back to OFF.
3. Set the "PROG" switch to ON.
4. Unroll the cover while holding the switch in the "Close" position (if the motor does not start, the "DEFAULT" indicator light (red LED) is not lit and the switch wiring is correct, invert the motor wires).
5. Release the switch once the pool is fully covered.
6. If required, go back (switch to Open position), this absolutely must be followed by closing the pool.
7. Set the "PROG" switch to "OFF".

INSTALLATION

▶ PROGRAMMING THE TORQUE LIMITER (AUTOMATIC SWITCH)



only for MIT 1210 and MIT 3210



The automatic switch protects the system from any potential oversights with regard to the unlocking of the fastening control boxes, when the pool is opened.

If the cover is blocked, the motor will stop automatically.

The different reasons for a blockage:

- Fastening control boxes have not been unlocked.
- The cover is scraping (on a joist, on the pool rim...).
- Presence of an object in the pool (robot, Counter-weight...) that is blocking the cover.

1. First set the limit switches for the cover.
2. Put the cover into the closed position.
3. Put the torque limiter adjustment potentiometer into the 1 position.
4. Open the cover.
5. If the protection is triggered (motor stops and orange protection light flashes), close the cover again, increase the torque limiter by one position and open the cover. Repeat these operations until you reach the "high sensitivity" position of the torque limiter that allows you to open the cover without triggering the protection system.
6. Once the "high sensitivity" position has been set, we recommend that you increase the position of the torque limiter setting by one in order to obtain an average sensitivity setting. This setting will help avoid the system being triggered at random times.



The torque limiter is only active when the protection LED is lit (orange, not flashing). To deactivate it, simply put the torque limiter setting potentiometer to the 0 position.

INSTALLATION

▶ LED SIGNALLING

- ● ● Initialisation (Red LED green LED and orange LED flash alternately).
- Signal from sensor (motor working, regular slow flashing).
- Lit and not flashing = Problem with sensor (check the connections and cables).
- ● Lit and not flashing = Problem with the software (reprogramme the limit switches).
 - Lit and not flashing = Control of over-torque.
 - Fast flashing = Over-torque fault.
 - Slow flashing = Acquiring over-torque protection.

▶ RESTORE FACTORY SETTINGS

In order to restore factory settings, switch the box off then switch it on again while pressing the "SETUP" switch for 4 seconds. This operation must necessarily be followed by reprogramming the limit switches.

SERVICING/MAINTENANCE

Any person carrying out work on the electrical parts must be qualified and they must comply with the manufacturer's instructions in addition to the applicable standards and regulations.



During any intervention, the technician must wear PPE (personal protective equipment): gloves, goggles, mat, etc...

We recommend that the installation be disconnected from the power prior to any intervention taking place.

WATER LEVEL IN POOL

- In order to ensure maximum safety and correct operation of the rewinder, always check that the water level in the pool remains constant and complies with the manufacturer's requirements (for greater comfort, use an overflow and a water level regulator).
- A water level that is too high is due to the overflow being obstructed by leaves or other items.
- A water level that is too low means that there is a risk of blockage.
- In case of a recess or a handrail, the water level must be controlled by a level regulator.

WATER FILTRATION AND TREATMENT

- Programme filtration to take place at a time when the sun is shining on the pool and ensure that it is set to work all the time when the water reaches 28°C.
- In order to ensure that your installation will last, the water in the pool must be correctly treated in compliance with the applicable standards and recommendations (NF EN 16713-3).
- The pH, hardness and alkali levels of the water must be checked and adjusted as often as is necessary (although you will need to ensure that you don't correct these three parameters independently of each other but do so using the Taylor table and provide the water with balance with regard to the three parameters analysed).

CARE (responsibility of the customer)

- Clean your slatted cover thoroughly twice a year (when opening the pool for the season and when winterising it). This is even more important if your pool water is hard. To do this, use a descaling cleaner (see catalogue) and rinse with a water spray.
- Inspect the entire system if an abnormal load is placed on the cover (such as in the event of a fall).
- Inspect the straps annually.
- Do not wash IPE duckboard with a high pressure washer, we recommend washing them regularly with clean water and a non metallic brush.
- Do not run, walk with care, the surface of the gratings can be made slippery by poor maintenance.
- Take care to clean the gratings regularly so that their surfaces do not become slippery.
- If the gratings become slippery, remove them and clean them mechanically.
- Cleaning and maintenance by the user must not be carried out by unsupervised children.

SERVICING/MAINTENANCE

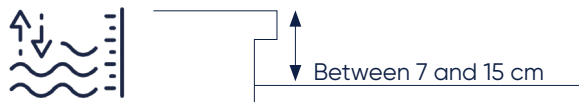
MAINTENANCE (ONCE PER YEAR MINIMUM)

- All interventions must be carried out by a professional, who will contact the manufacturer if necessary (contact details on the back page of this document).
- All spare parts must come from the manufacturer or comply with standard NF P90-308.
- Check that the installation is working correctly.
- Inspect the cover thoroughly.
- It is necessary to check at the start of every season and if any accident has occurred (if anything has fallen onto the cover, if hail has struck the cover, if the cover has had to bear any abnormal weight etc...) ensure that none of the slats has sustained any visible damage that may affect the safety of the cover (cracked slats, holes, deformations, etc...). Make sure that you change the slats or the entire cover if required.
- In winter as in summer, do not place an opaque sheet over the cover: this may damage the slats due to high temperatures.
- Check the state of the straps (seams) and in particular the wear on the anti-abrasion sleeve. If the latter is no longer fulfilling its role of protecting the strap against abrasions from the pool rim, then replace it.
- Once a year, check that the electrical connections are sufficiently tight.
- Customer service: contact details on back page of document

SERVICING/MAINTENANCE

WINTERING

- Position the cover in the closed position and keep the water level constant in accordance with the manufacturer's recommendations.



- Snow should be removed from the cover using a blunt tool (such as a synthetic floor brush or broom).
- Winterise the pool according to its geographical location.
- Close the cover in the safety position.
- We recommend installing an Ivernée winter cover or an Ivernée Plus protective cover to protect the cover from UV rays and dirt.

SPARE PARTS

Online catalogue :



<https://www.my-cfgroup.fr/fr/pieces-detachees>

SAFETY ADVICE

Dear Customers,

Thank you for placing your trust in us by selecting a safety cover made by DEL.

Please read the recommendations set out below with care.

WARNING

- **Swimming pools can represent a serious danger for your children. Drowning can happen very quickly.**
Children who are close to a swimming pool need to be watched constantly and actively, even if they know how to swim.
- **The physical presence of an adult is absolutely essential whenever the pool is open.**



- Learn lifesaving skills.
- Memorise the telephone numbers for the emergency services and ensure that they are displayed close to the pool.

☎ ... or **112**
FIRE SERVICE

☎ ...
AMBULANCE
SERVICE

(write the number that applies in your region)



POISON CONTROL
CENTRE

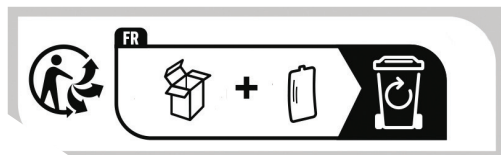
SAFETY ADVICE

- This section is by no means a replacement for common sense or individual responsibility. Its aim is not to replace the vigilance of parents and/or responsible adults, who remain the essential factor in ensuring the protection of young children.
- **Warning:** safety is only guaranteed when the cover is closed, locked and correctly installed in compliance with the manufacturer's instructions.
- The cover must systematically be closed if you are absent from home, even for a very short period.
- Check that no people and no foreign objects are in the pool before and during opening and closing operations.
- Make sure that you place all of the tools required for moving the pool cover out of the reach of children (e.g. the key).
- The operation of the mechanism must only be carried out by a responsible adult.
- Climbing, walking or jumping on a pool cover is strictly forbidden.
- Take all necessary measures to prevent access to the pool for young children until the cover is repaired or when a malfunction is observed that prevents closing or in case of temporary unavailability of the equipment or the pool.
- Respect the water levels designated by the manufacturer.

A child can drown in less than 3 minutes, no type of protection can ever replace the watchful eye and vigilance of a responsible adult.

RECYCLING

PACKAGING



Dispose of the packaging in line with current rules and regulations.

END OF LIFECYCLE



- Do not put your scrapped equipment or used batteries in with unsorted household waste.
- You are responsible for disposing of all of your waste, in particular electrical and electronic equipment by taking it to a collection point where recycling and valorisation are carried out.
- Certain products potentially contain substances that are dangerous for the environment, and you need to ensure that these are eliminated or neutralised.
- Make sure that you are aware of all existing recovery and collection systems.



discard the manual in line with the current regulations.



Adresses sur quefairedemesdechets.fr

REGULATIONS

STANDARD

- This cover complies with standard NFP 90-308.
- In the case of partial supply of the equipment making up the safety cover, it is the installer's responsibility to check that the components supplied separately also comply with the standard, and that the overall compliance of the installation is effective.

WARRANTY CONDITION

log on to www.del-piscine.fr to consult all our guarantees.



<https://www.del-piscine.fr/rechercher-une-garantie>



NOTES





NOTES



DEL SAS

ZA LA BASSE CROIX ROUGE
35530 BRÉCÉ - FRANCE

☎ +33 (0)9 70 72 5000 / INFO.FR@CF.GROUP

STADMET

A brand by CF group



ORIGINAL INSTRUCTIONS

A-DOTE03510.L1 / 07 2024