

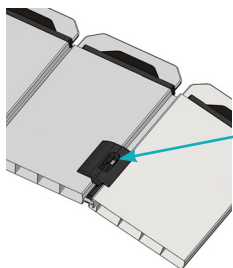
BUTÉE ARTICULATION LAME L84

SLAT L84 ARTICULATION STOP

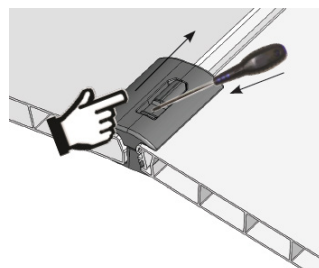
KLINGENGELLENKANSCHLAG

TOPE DE ARTICULACIÓN DE LA LAMA L84

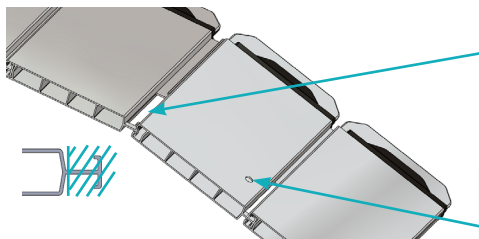
1



- retirer le ski
- remove the ski
- den Ski abmontieren
- desmontar el esquí

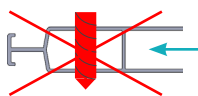
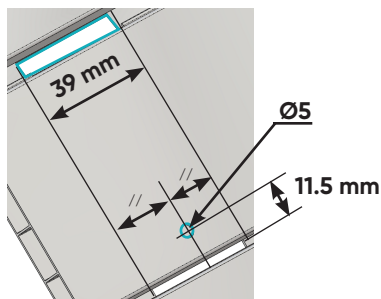


2



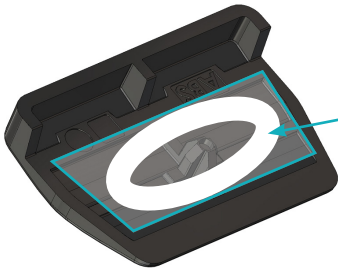
- Faire une encoche
- Make a notch
- Eine große Kerbe machen
- Hacer una muesca

- Faire un perçage
- Drilling a hole
- Eine Bohrung machen
- Perforar un agujero



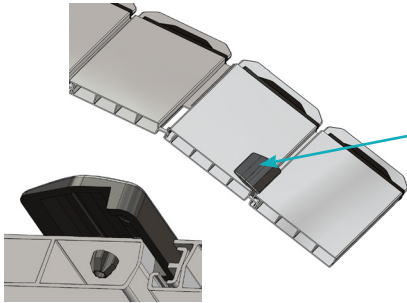
- perte d'étanchéité.
- loss of watertightness.
- Verlust der Dichtigkeit
- pérdida de estanqueidad.

3



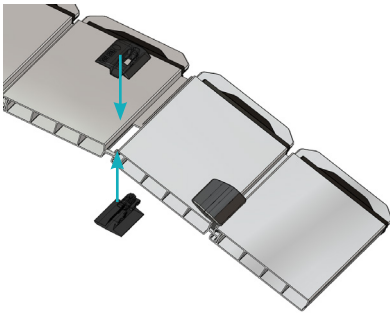
- Appliquer de la colle MS polymère pour assurer l'étanchéité autour du plot.
- Apply MS polymer adhesive to seal around the stud.
- Tragen Sie MS-Polymer-Kleber auf, um den Bereich um den Klotz herum wasserdicht zu machen..
- Aplique adhesivo polimérico MS para sellar alrededor del espárrago.

4



- Installer la butée
- Install the stop
- den Anschlag installieren
- Instalar el tope

5



- Monter le ski
- Mounting the ski
- Den Ski aufstellen
- Montar el esquí

